



Spanish Lung Cancer Group

Lung Cancer Research since 1991

www.gecp.org





Since 1991 working cooperatively to advance against lung cancer.

TABLE OF CONTENTS

1. About SLCG	4
Who we are	5
Mision and vision	6
Our values	7
Strategic lines	8
What we do	9
2. Key Facts at a glance	10
3. Structure and Organization	14
Governance structures	15
Scientific structures	15
Supporting structures	16
SLCG Headquarters	16
Laboratory facilities	18
4. Lung Cancer Research	20
Research lines and clinical trials	21
Scientific results and excellence	26
5. International Alliances	28
6. Other SLCG Activities	30
Scientific and clinical training programs	31
Communication and dissemination	32
Social commitment	33
7. Annex I. Clinical trials from 2015	34
8. Annex II. Publications from 2015	40

1

» About SLCG



WHO WE ARE

The Spanish Lung Cancer Group (SLCG), founded in 1991, is one of the first independent clinical research groups in the oncology setting that was created in Spain to advance the cure for the disease of lung cancer. With over 30 years of experience, the SLCG has achieved a remarkable position among the scientific and medical community and is one of the most active working groups at national and international level. Some of the SLCG's studies have been determinant in changes in the patient care practice and in the use of new treatments.

MISION AND VISION



COMMITMENT TO RESEARCH

The SLCG is committed to and support translational and cooperative research as a key factor in the fight against lung cancer, encouraging new lines of work in independent studies and supporting young talent with grants for new projects. This enables us to provide early access to new therapies and drugs to make progress in improving patient survival.

MULTIDISCIPLINARY APPROACH

The Group comprises more than 650 specialists (oncologists, thoracic surgeons, radiotherapists, pneumologists, epidemiologists, anatomical pathologists...) and brings together 192 hospitals throughout Spain. This networking enables the coordination among different institutions and experts to enhance collaboration in studies and increase quality standards.

SOCIAL IMPLICATION

The SLCG is socially involved in the analysis and radiography of lung cancer in Spain. In addition, we fight for the primary prevention of the disease, supporting social awareness against smoking.

OUR VALUES



To promote multidisciplinary work and coordination between different institutions and specialists.



To create personalized plans for each patient, allowing the most effective therapies to be identified to improve patients' quality of life and increase their survival rates.



To enable the development of protocols and new lines of research.



To facilitate early access to new therapies and drugs.



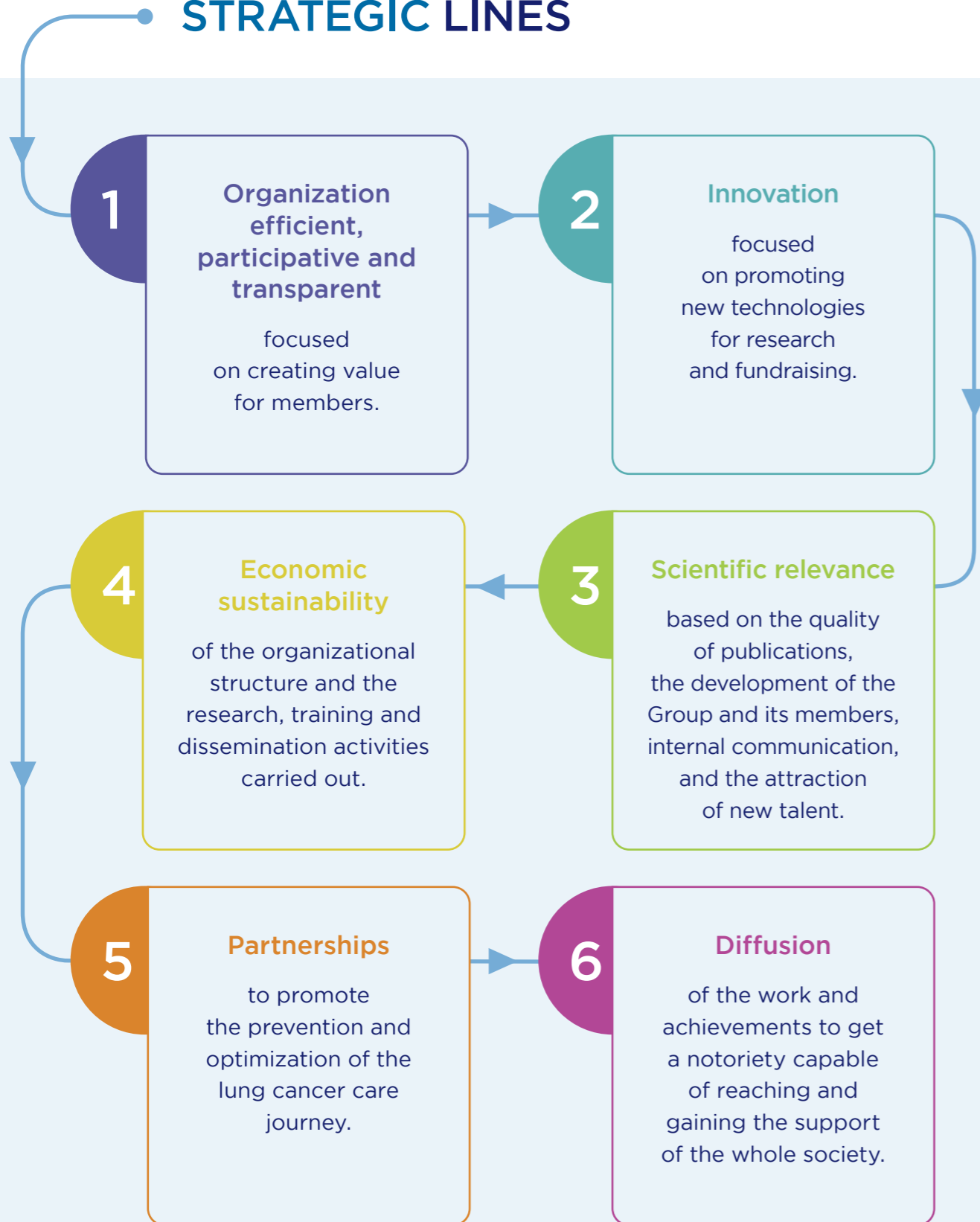
To promote translational research.



To prevent and raise awareness about the impact of lung cancer in the society and ways to prevent it.

The SLCG has a vocation for transparency. Its activity, supported thought private initiative, is open to society and to collaboration with other research groups and medical societies.

STRATEGIC LINES



WHAT WE DO

COMMITMENT TO RESEARCH

The main goal of the SLCG is to make progress in increasing lung cancer patient survival by establishing new lines of research to achieve more effective treatments and provide early access to new therapies. The commitment to independent, translational and cooperative research is a key factor in the fight against lung cancer.

CONTINUED EDUCATION

The SLCG contributes to updating knowledge about lung cancer by organizing and participating in scientific training activities and events for current and future specialists and researchers in the field of lung cancer. It also provides support to young talent with the granting of scholarships to new research projects.

SOCIAL PARTICIPATION

As experts in lung cancer, the SLCG is committed to raising social awareness of the disease, so it participates in the conduct of testing and mapping for lung cancer in Spain, detecting new alerts and trends and demanding that the authorities adopt the necessary measures to deal with its incidence and mortality. It also fights for the primary prevention of the disease, supporting social awareness against the consumption of tobacco.

Key facts at a glance

The SLCG is the result of a previous trajectory of collaboration among institutions and specialists and contributes to the promotion of network scientific research activities. Currently, the SLCG is a consolidated group with a large number of specialists and hospitals which are located around the entire national territory. Also, the high volume of scientific activity in research in recent years has led to an exponential growth of the staff.

Currently, the SLCG is positioned as one of the major national and international references in the field of lung cancer.



SLCG HOSPITALS AND SPECIALISTS ASSOCIATED



KEY FACTS AT A GLANCE

The cooperative groups are a stable independent cancer research network that began in Spain more than three decades ago. They are non-profit organizations, multidisciplinary comprising medical oncologists and other cancer specialists. The work of the Cooperative Groups is crucial to increasing the cure and survival rates of cancer patients. Some SLCG

trials have been decisive in changes in patient care practice and the use of new treatments. The SLCG is currently one of the most active working groups in lung cancer. The Spanish Lung Cancer Group is committed to transparency and its activities are open to society and collaboration with other research groups and medical societies.



3

» Structure and organization

The group is organized through three types of structures: governance, scientific and supporting structures.

GOVERNANCE STRUCTURES

GENERAL ASSEMBLY

The General Assembly, composed of all the associated members, is the supreme governing body of the SLCG.

BOARD OF DIRECTORS

The Board of Directors is responsible for the management and representation of the SLCG, for setting the scientific policy and for ensuring the appropriate scientific interest of the proposals for research studies promoted by the SLCG.

ADVISORY BODIES

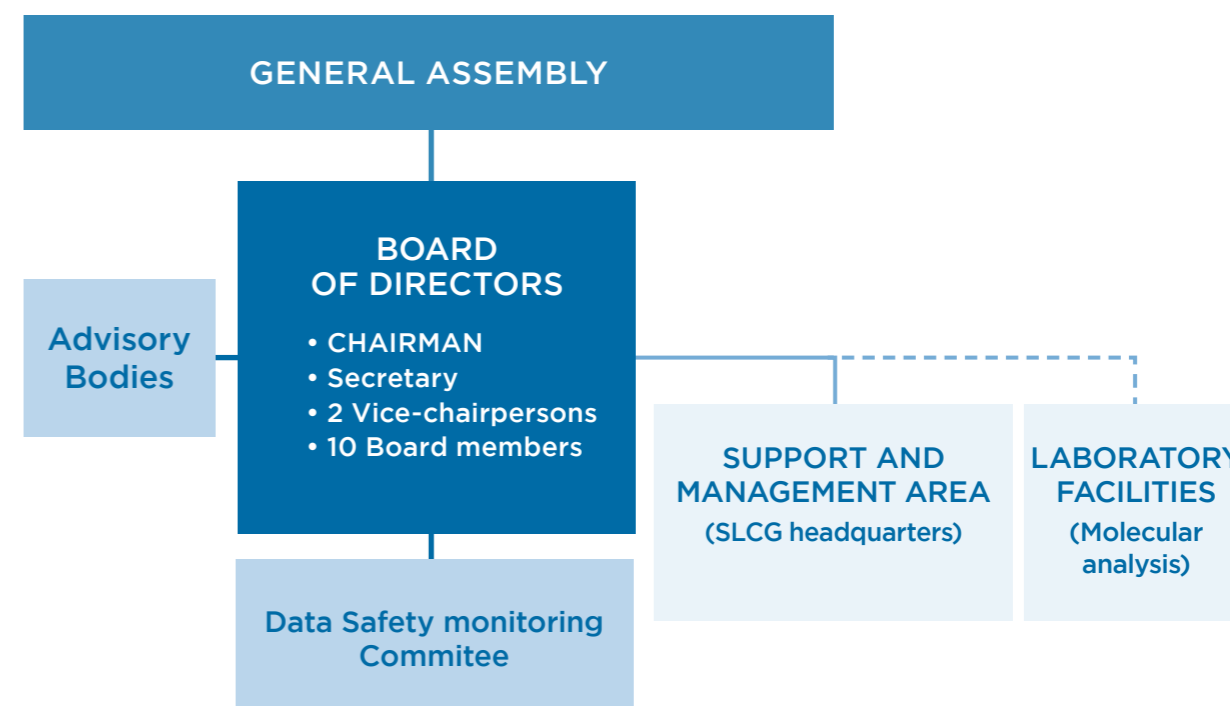
The Advisory Bodies give their independent and external opinion

on those issues that have been submitted by the SLCG (in accordance with the ethical and transparency commitment assumed) to facilitate and objectify the decision-making by the Board of Directors.

SCIENTIFIC STRUCTURES

DATA SAFETY MONITORING COMMITTEE

The body responsible for reviewing and assessing, based on the available data, a clinical trial progress in terms of safety, efficacy and scientific validity.



SUPPORTING STRUCTURES

SLCG HEADQUARTERS

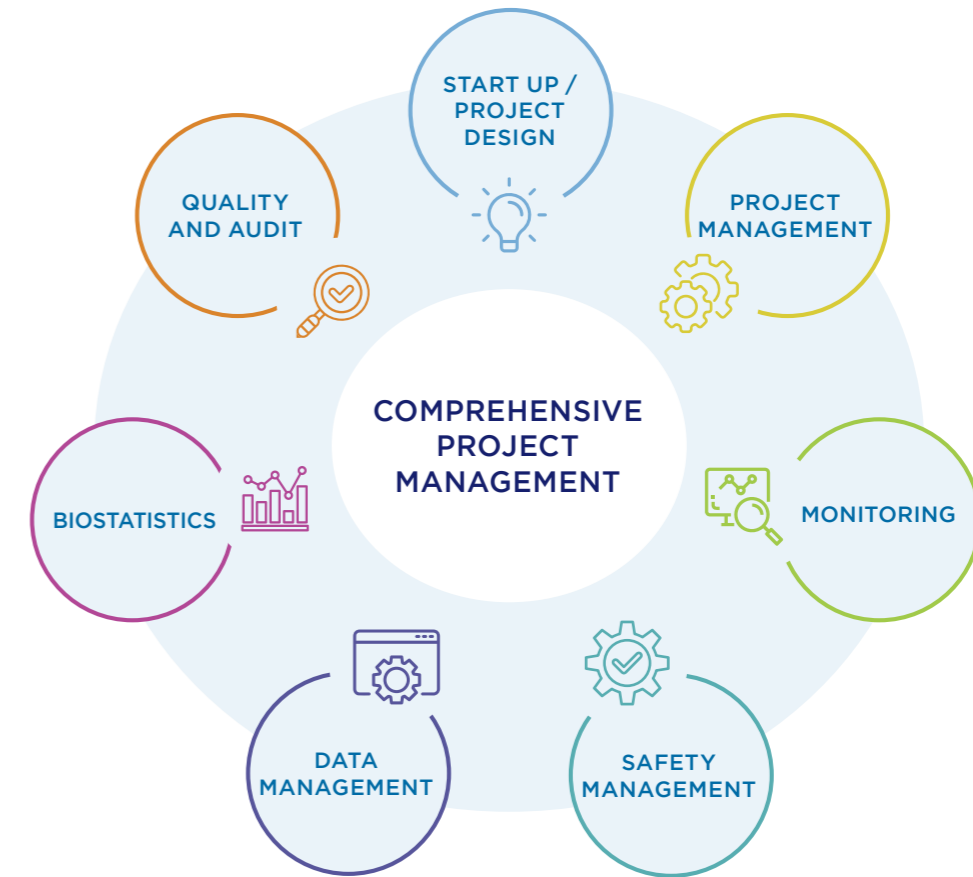
The SLCG headquarters manages and supports the different research, training and communication activities carried out within the Group.

With over 20 years of experience, high know-how and a solid work and management team, the SLCG has achieved a significant positioning among the scientific and medical community in the development and coordination of lung cancer research. It emphasizes the direct and close relationship between the SLCG headquarters teams and the principal investigators, and their

work teams, due to the support that the SLCG team provides to the hospital study coordinator teams in the development of the studies promoted or managed by the SLCG.

Apart from national projects promoted by the SLCG, the headquarters team also collaborates, manages and monitors international studies in which those hospitals belonging to the SLCG actively participate.

The team in SLCG's headquarters comprises people with large expertise in different activities related to these main areas:



The SLCG headquarters has a consolidated team, with extensive experience in manage research and a deep knowledge of lung cancer, that offers added value by providing comprehensive project management. Following

the international guidelines for good clinical practice, the team is responsible for managing the entire clinical trial cycle from the design and start-up, through the monitoring, to the close-out and publication of the results.



ADMINISTRATION-SECRETARY UNIT

- SLCG's member management
- File maintenance
- Activity reports
- Internal and institutional communication
- Activities and events organization
- Partnership and sponsorship management
- Economic and financial management.



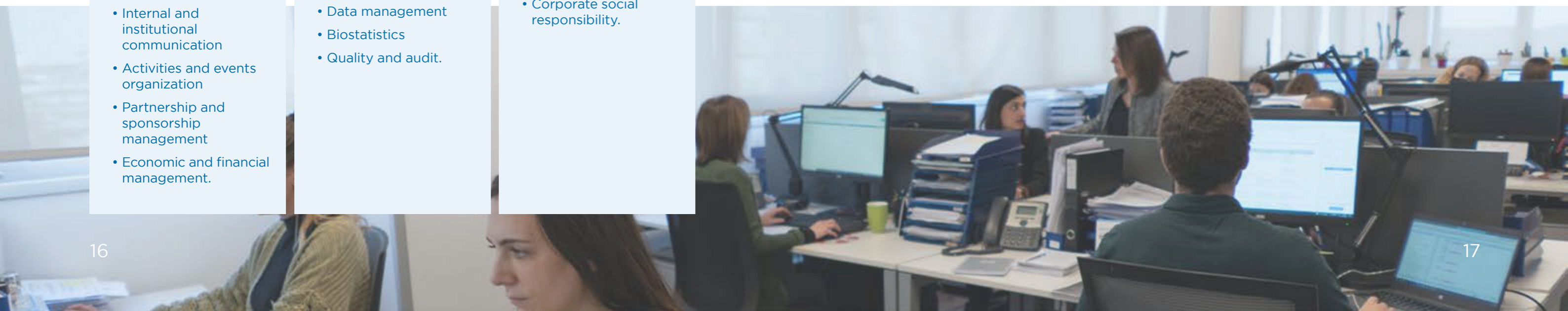
CLINICAL OPERATIONS UNIT

- Project design, start up and management
- Monitoring
- Pharmacovigilance
- Data management
- Biostatistics
- Quality and audit.



COMMUNICATION UNIT

- External communication and public relations
- Internal communication support
- Corporate social responsibility.



LABORATORY FACILITIES

The Group is committed to the individualization of treatments based on the genetic profile of each patient; thus, it focuses its research on the search for genetic alterations in the tumor and its response to different treatments. In parallel, it has developed an increasing number of basic research studies.

This means that all the clinical studies promoted by the SLCG have associated translational research that

is usually carried out at laboratory facilities. These laboratories are often part of institutes for health research associated with SLCG's member hospitals, and account for core units such as cell culture, cytometry, microscopy or molecular biology units where can be performed molecular analysis of patient samples (tumor tissue or liquid biopsy) collected in clinical trials and other analysis within basic research projects.



STRUCTURE AND ORGANIZATION

Specifically, the Puerta de Hierro-Segovia de Arana Health Research Institute (IDIPHISA) carries out a large part of the translational research of the SLCG's projects. The Liquid Biopsy Laboratory (LBL), from the Department of Medical Oncology of the Puerta de Hierro Hospital, provides diagnostic services and carries out research projects in the field of personalized medicine.

The LBL have been carried out translational research from some SLCG's clinical trials such as NADIM I and II, NADIM REAL, TELMA, APOLO, NEODIANA or ATLAS. Some of its main lines of research are:

Lines of research

- ▶ Clinical utility of circulating tumor DNA (ctDNA) for the management of lung cancer patients
- ▶ Study of the tumor microenvironment and the immune system-tumor relationship
- ▶ Determination of genetic profile in lung cancer
- ▶ Discovery of predictive and prognostic biomarkers in liquid biopsy.



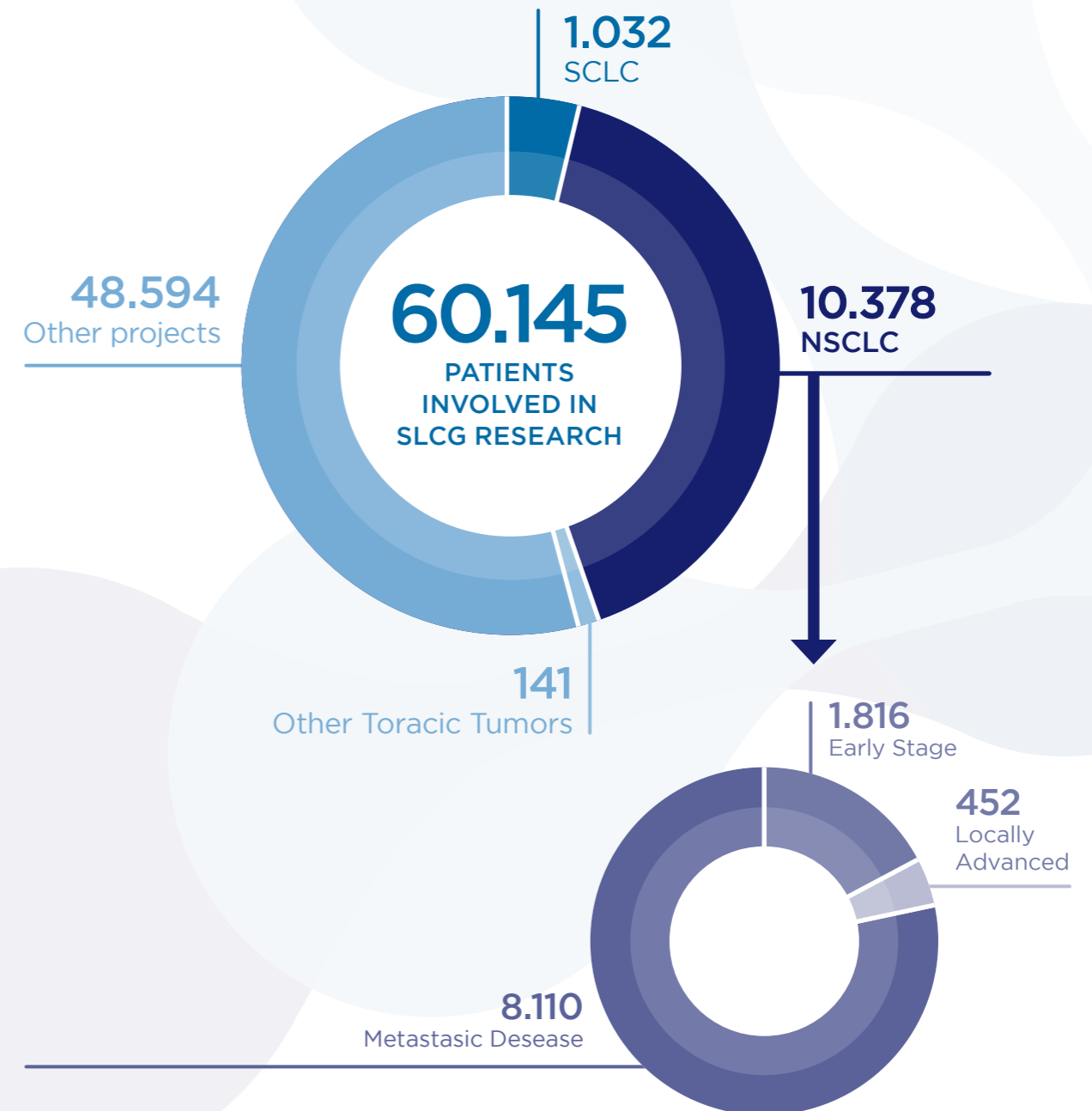
The LBL is provided with high technology equipment that allows the application of very innovative methodologies, such as: multiplex immunofluorescence, flow cytometry, cytokine arrays, TCR and BCR sequencing, single cell and spatial transcriptomic.

4

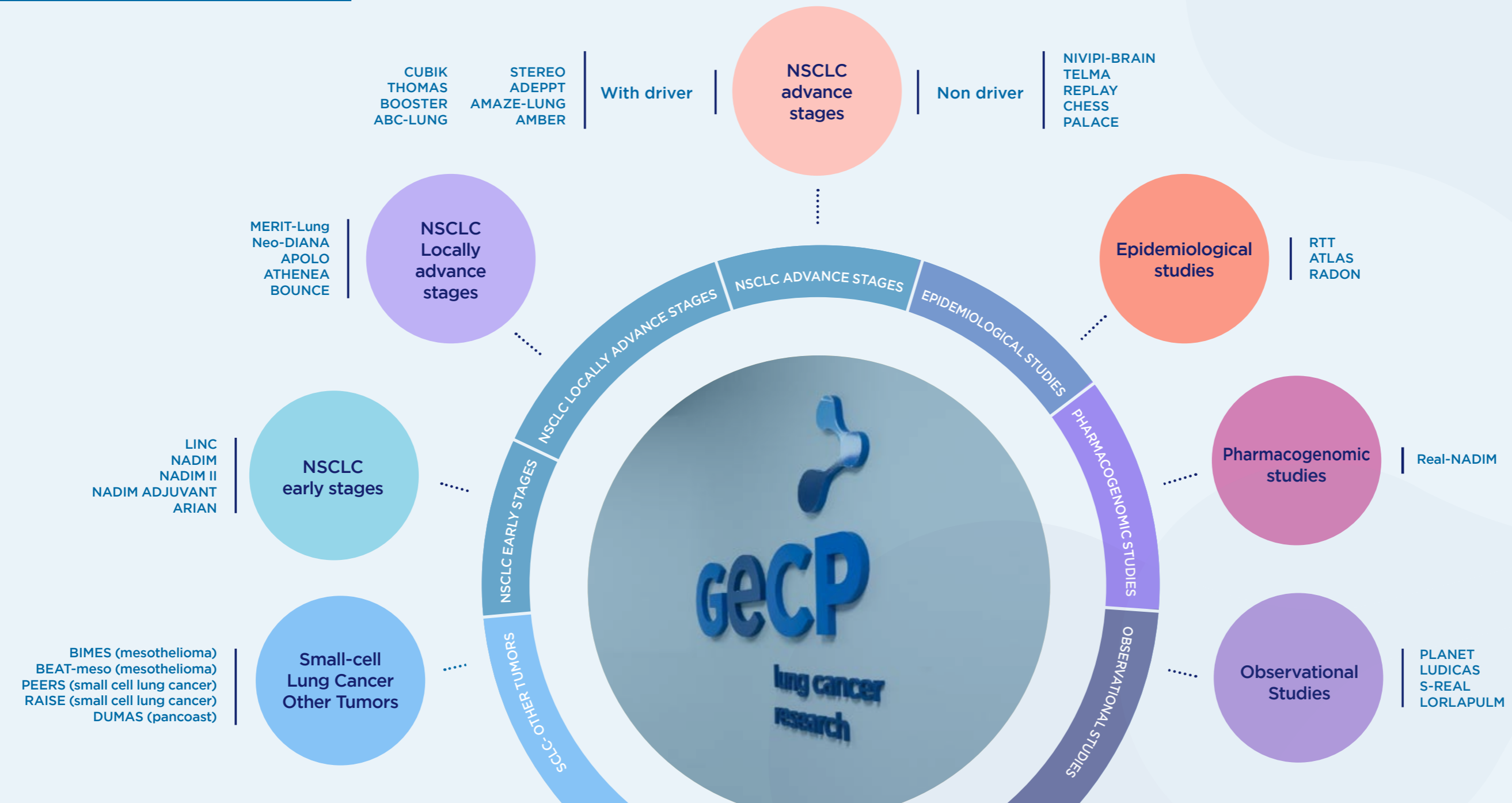
Lung cancer research

RESEARCH LINES AND CLINICAL TRIALS

Approximately, 90% of the studies carried out by SLCG are in-house developments, which highlights the group's high know-how in proposing ideas and being at the forefront of lung cancer research. Since its creation, the SLCG has conducted clinical trials and investigational projects, in different clinical situations and covering all aspects of the pathology.



SLCG RESEARCH



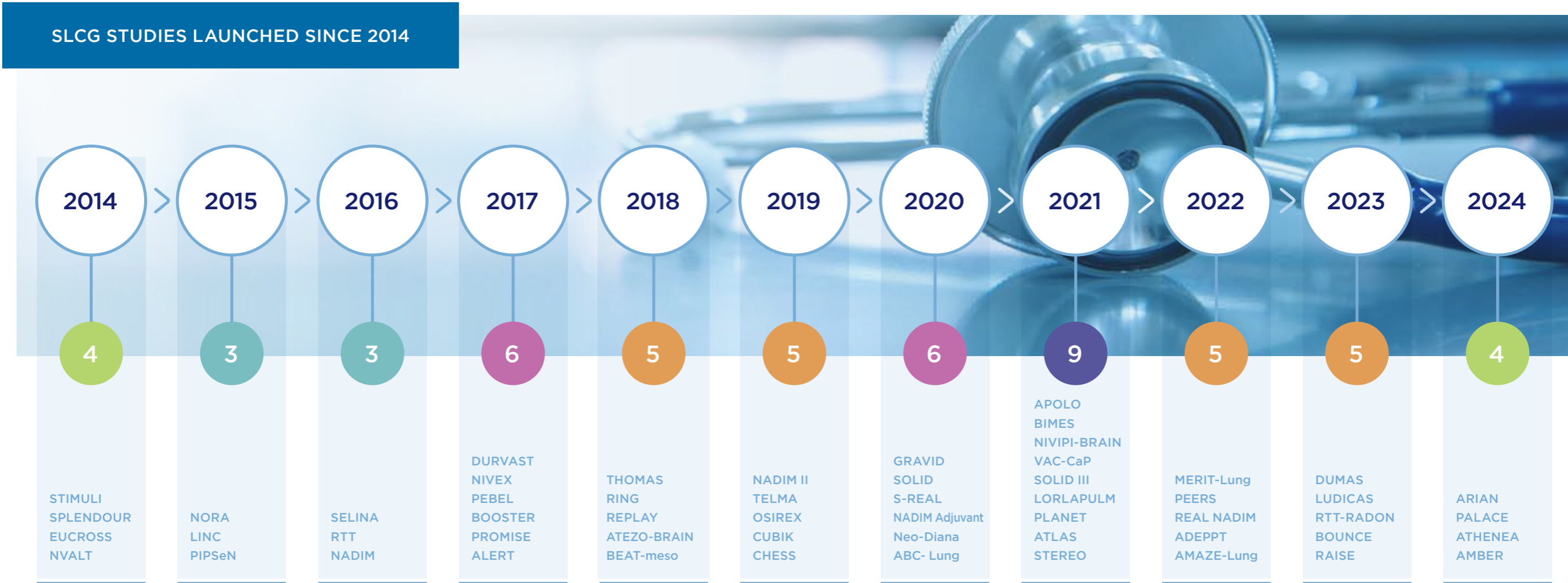
THORACIC TUMOR REGISTRY (RTT)

The SLCG marked a milestone in Spain by creating the first observational registry to know the descriptive epidemiology of thoracic tumors in Spain as well as clinical and histological data, diagnoses, treatments received and prognostic factors. RTT is an ongoing study (NCT02941458) that started the recruitment in August 2016 and is representative of the lung cancer reality in Spain.

Data are collected from patient’s medical records by the participating centers in an electronic data capture (EDC) system and are classified into different sections: sociodemographic variables, epidemiological variables, clinical variables, molecular/genetic variables and treatment outcome variables. Given the quality and quantity of the data collected, the registry becomes a valuable source of knowledge of the situation of lung pathology, generating publications of high impact and international repercussion.

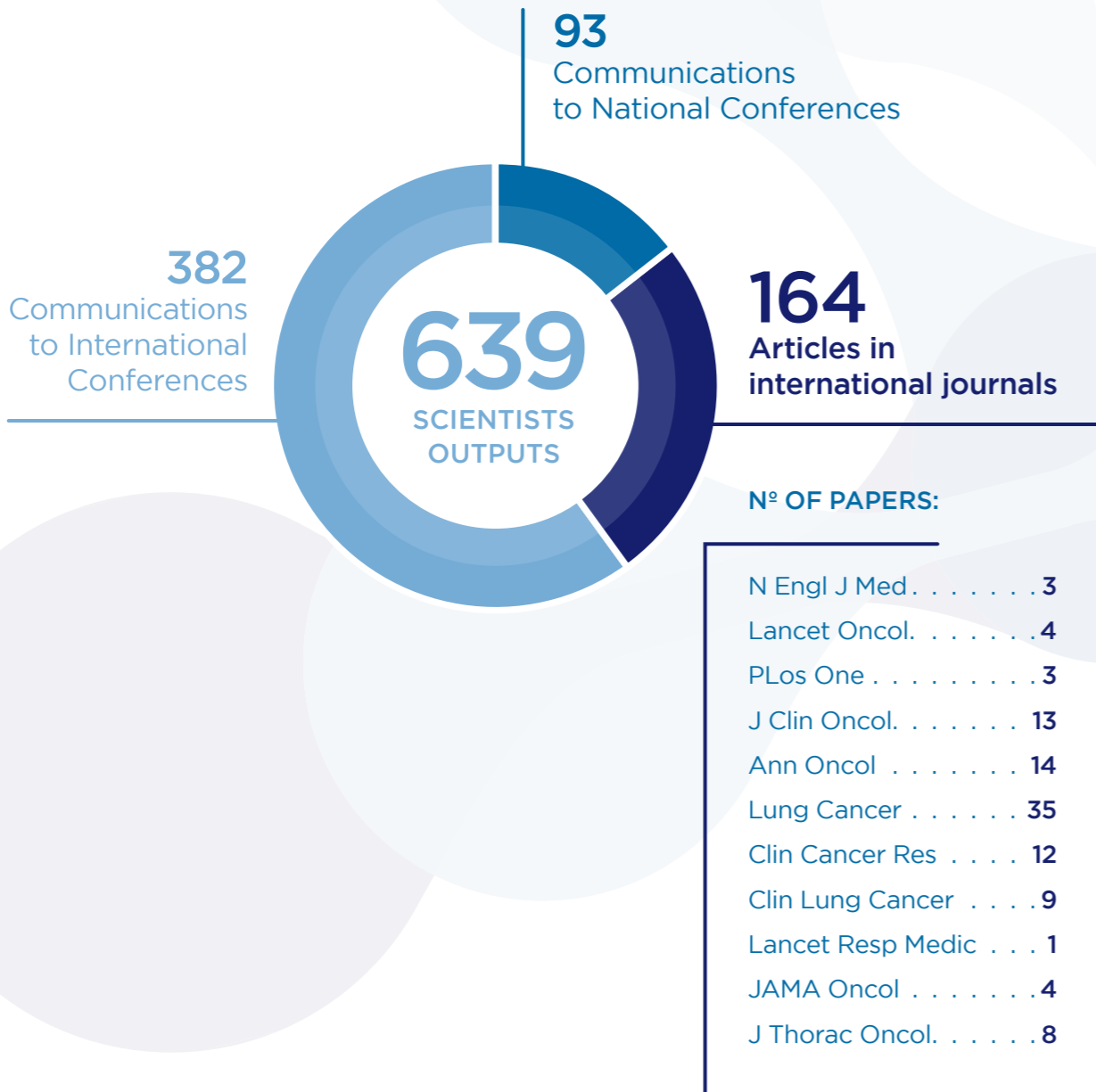
In addition, the SLCG has launched the ATLAS Project to study genetic markers in non-small cell lung cancer patients. The analyses are performed on tumor tissue using NGS from a central laboratory and the information is available in the EDC system of RTT. The participating centers will be able to use this information to help establish the best treatment for each lung cancer patient, favoring access and the universality of personalized medicine in Spain. With the ATLAS

Project, together with the RTT, the SLCG aims to create the National Observatory of Lung Cancer with the largest database of clinical and molecular characteristics of this disease in Spain. This database will provide relevant and comprehensive information for a better understanding of the dimensions of lung cancer at a scientific and social level.



SCIENTIFIC RESULTS AND EXCELLENCE

The impact of the SLCG publications in recent years has been high relevance, both in terms of quantity and quality, since many of the trial results have been published in leading international journals. This has positioned the SLCG at the forefront of relevance in lung cancer research worldwide and has been decisive in bringing about changes in the practice of patient care.



5

» International Alliances

SLCG’s activity transcends national borders and the Group is currently among the most active international working groups in lung cancer field. Its participation and organization of Symposia and International Congresses is also noteworthy.

REDICAP. Ibero-American cooperation

The SLCG, together with researchers from Argentina, Colombia, Peru and Portugal, has joined synergies to improve the outlook for lung cancer by creating REDICAP, Red Iberoamericana de Cancer de Pulmón. The SLCG currently holds the presidency of this association.

H2020 European Projects

The Group also participates in European projects within the framework of the Horizon 2020 programme, such as the **CLARIFY project**, which aims to facilitate the early discovery of risk factors that may deteriorate a long-term cancer survivors’ condition after the end of the oncological treatment; and the IASIS project, which tries to advance precision medicine in lung cancer and Alzheimer’s disease through Big Data management.



The SLCG actively collaborates with other working and research groups from around the world:

European Thoracic Oncology Platform, ETOP

Groupe Français de Pneumo-Cancérologie

Associazione Italiana Oncologia Toracica, AIOT

Manchester NHS Foundation

Belgium and Luxemburg groups

Chinese Group, parallel

CTIG. Serial biopsy project in EGFR mut+

ENCORE CLINICAL

Lung Cancer Group Cologne

Instituto Nacional de Cancerología, México

NVALT. The Netherlands

CCTG Canada

Lung Cancer Ambition Alliance

Proyecto Cassandra

SCIENTIFIC AND CLINICAL TRAINING PROGRAMS

The promotion and encouragement of research and training are basic pillars for the SLCG. This, the Group organizes and carries out regularly different scientific meetings with a multidisciplinary vision that have been consolidated as meeting points between the different professionals involved in the management of lung cancer. The final goal is to

provide information and updates on the pathology accessible to young and experienced specialists through different formats: annual congress, educational symposium, competences courses, workshops, podcasts, streaming, webinars, etc. It also launches fellowship programmes for funding new research projects or for training and research.

Other SLCG activities



CONGRESS, SYMPOSIA, HIGHLIGHTS INTERNATIONAL CONFERENCES, LUNG CANCER NEWS

- Gecp Annual Meeting
- Lung Cancer Updates (platform Access Summaries for ESMO, ASCO; AACR, IASLC)
- Webinars Gecp
- Podcast Lung Cancer



YOUNG RESEARCHERS SUPPORT

- Workshop 'Jóvenes Investigadores' Gecp
- SLCG Grants (Research Project)



LEARNING AND UPDATES IN LUNG CANCER

- Curso de Competencias en Cáncer de Pulmón Gecp
- Training and discussion programmes

COMMUNICATION AND DISSEMINATION

External communication has focused on informing society of advances in research, as well as increasing knowledge and social awareness of the disease. The SLCG disseminates high-impact newsletters in press, radio and television, keeps an updated and dynamic webpage and uses different social media (X, Facebook, LinkedIn and Instagram) to reach audiences of different profiles.

Disseminating the information among the associated members, the scientific community and other entities related to SLCG is essential to improve the pathology knowledge and to consolidate the relationships with the different SLCG audiences. The SLCG newsletter is the most relevant tool in this setting to inform about the Group activities and to give visibility and engage the associates with the organization.

SOCIAL AWARENESS



Scholar activities against tobacco (teenager students from 12 to 16)



Social awareness campaigns



Reports and alerts about the situation and needs of the pathology



SOCIAL COMMITMENT

Thanks to their expertise in lung cancer, the SLCG is focused on creating social awareness of this disease. Some of their lines of work include:

Reference for social media in Lung Cancer

Mass media dissemination about the SLCG studies and activities.

Reports and Alerts about the situation of the pathology in terms of treatment, investment and research

Social Awareness in Lung Cancer

Awareness campaigns allow to inform society about the challenges and needs of lung cancer pathology and give patients a voice

Campaigns against tobacco

Information and awareness campaigns against tobacco for risk group.
Scholar prizes for teenager students from 12 to 16 years in innovatory format (spots, singles, raps, tiktoks)



Public Lobby

Contact and coordination with Public Health Administrations, entities and associations of interest related to lung cancer

Support to patient associations

Collaboration with Asociación Española contra el Cáncer (AECC), Grupo Español de Pacientes Con Cáncer (GEPAC), Asociación Española de Afectados de Cáncer de Pulmón (AEACaP), Ricky Rubio Foundation, Fundación Más que Ideas

Annex I.

Clinical trials from 2015

EARLY STAGES	
LINC (BR.31)	A Phase III Prospective Double Blind Placebo Controlled Randomized Study of Adjuvant MEDI4736 In Completely Resected Non-Small Cell Lung Cancer. NCT02273375
NADIM (GECP 16/03)	Neo-Adjuvant Immunotherapy With Nivolumab for Non Small Cell Lung Cancer Patients. NCT03081689
NADIM II (GECP 18/02)	A Randomized Phase II Study of Neo-adjuvant Chemo/Immunotherapy Versus Chemotherapy Alone for the Treatment of Locally Advanced and Potentially Resectable Non-small Cell Lung Cancer (NSCLC) Patients. NCT03838159
NADIM ADJUVANT (GECP 20/05)	A Phase III Clinical Trial of Adjuvant Chemotherapy vs Chemoimmunotherapy for Stage IB-IIIa Completely Resected Non-small Cell Lung Cancer (NSCLC) Patients. NCT04564157
LOCALLY ADVANCED STAGES	
NORA (GECP 15/02)	Phase II Clinical Trial With Metronomic Oral Vinorelbine and Tri-weekly Cisplatin as Induction Therapy and Subsequent Concomitantly With Radiotherapy (RT) in Patients With Lung Cancer (NSCLC) Locally Advanced Unresectable. NCT02709720
Neo-DIANA (GECP 20/01)	A Phase II Trial of Neoadjuvant Treatment Carboplatin-Pemetrexed-Bevacizumab Plus Atezolizumab for the Treatment of Locally Advanced and Potentially Resectable NSCLC Patients With EGFR Mutations. NCT04512430
APOLO (GECP 20/08)	Phase II Clinical Trial of AMG510 (Sotorasib) in Stage III Unresectable NSCLC KRAS p.G12C Patients and Medically Ineligible for Concurrent Chemo-radiotherapy. NCT05398094
MERIT-lung (GECP 20/10)	A Phase III Prospective Double Blind Placebo Controlled Randomized Study of Adjuvant MEDI4736 In Completely Resected Non-Small Cell Lung Cancer. NCT02273375
BOUNCE (ETOP 21-21)	A Multicentre, Randomised, Phase II Trial of Brigatinib Consolidation Versus Observation or Durvalumab in Patients With Unresectable Stage III NSCLC and ALK-rearrangement, After Definitive Chemo-radiotherapy. NCT05718297

ADVANCED STAGES. WITH DRIVER

CUBIK (GECP 19/01)	Clinical Utility of Liquid Biopsy as a Tool to Assess the Evolution of Brigatinib Treated Patients With Non-small Cell Lung Cancer With EML4-ALK Translocation: an Exploratory Study. NCT04223596
THOMAS (GECP 17/04)	An Open Label Phase II Study of Tipifarnib in Advanced Squamous Non-small Cell Lung Cancer With HRAS Mutations. NCT03496766
BOOSTER (ETOP 10-16)	A Randomised Phase II Trial of Osimertinib and Bevacizumab Versus Osimertinib Alone as Second-line Treatment in Stage IIIb-IVb NSCLC With Confirmed EGFRm and T790M. NCT03133546
ABC-Lung (ETOP 15-19)	A Randomised Non-comparative Open Label Phase II Trial of Atezolizumab Plus Bevacizumab, With Carboplatin-paclitaxel or Pemetrexed, in EGFR-mutant Non-small Cell Lung Carcinoma With Acquired Resistance. NCT03133546
STEREO (ETOP 17-20)	A Multicentre Single-arm Phase II Trial Assessing the Safety and Efficacy of First-line Osimertinib and Locally Ablative Radiotherapy in Patients With Synchronous Oligo-metastatic EGFR-mutant Non-small Cell Lung Cancer. NCT04908956
AMAZE-lung (ETOP 18-21)	A Multicentre Single-arm Phase II Trial of Amivantamab, Lazertinib Plus Bevacizumab in Patients With EGFR-mutant Advanced NSCLC With Progression on Previous Third-generation EGFR-TKI. NCT05601973
ADEPPT (ETOP 22-22)	A Multicentre, Single-arm Phase II Trial of Adagrasib in Patients With KRASG12C-mutant NSCLC, Including the Elderly (≥ 70 Years) or Patients With Poor Performance Status. NCT05673187
PEBEL (GECP 16/06)	Survival, Quality of Life and Self-reported Outcomes of Elderly Patients With Advanced Non-small Cell Lung Cancer Treated With Pembrolizumab (MK-3475) in the First Line Setting. NCT03293680
NVALT (NVALT-15)	Phase II study with BIBF1120, an oral fibroblast growth factor 1 inhibitor, as second-line treatment in patients with non-small cell lung cancer and fibroblast growth factor receptor 1 gene amplification (NVALT-15).
ALERT-Lung (ETOP 12-17)	A Single Arm Phase II Trial Evaluating the Activity of Alectinib for the Treatment of Pretreated RET-rearranged Advanced NSCLC. NCT03445000

ADVANCED STAGES. WITHOUT DRIVERS	
TELMA (GECGP 18/03)	A Phase II Open Label Study of Atezolizumab in Combination With Bevacizumab as First Line Treatment for Locally Advanced or Metastatic High-intermediate Tumor Mutation Burden Selected Non-squamous Non-small Cell Lung Cancer Patients. NCT03836066
ETOP-CHESS (ETOP 14-18)	A Multicentre Single Arm Phase II Trial Assessing the Efficacy of Immunotherapy, Chemotherapy and Stereotactic Radiotherapy to Metastases Followed by Definitive Surgery or Radiotherapy to the Primary Tumour, in Patients With Synchronous Oligo-metastatic Non-small Cell Lung Cancer. NCT03965468
NIVIPI BRAIN (GECGP 21/02)	Nivolumab Plus Ipilimumab Plus Two Cycles of Platinum-based Chemotherapy as First Line Treatment for Stage IV/Recurrent Non-small Cell Lung Cancer (NSCLC) Patients With Synchronous Brain Metastases. NCT05012254
REPLAY (GECGP 17/02)	A Phase II Open-label Multicenter Exploratory Study to Assess Efficacy of Pembrolizumab Re-challenge as Second or Further Line in Patients With Advanced Non - Small Cell Lung Cancer. NCT03526887
SPLENDOUR (ETOP-5-12)	A Randomised, Open-label Phase III Trial Evaluating the Addition of Denosumab to Standard First-line Anticancer Treatment in Advanced NSCLC. NCT02129699
PIPSeN (CSET2014/2204_ PIPSeN)	A Randomized Double-blind Phase II Trial Evaluating Maintenance Olaparib Versus Placebo in Patients With Platinum-sensitive Advanced Non-small Cell Lung Cancer. NCT02679963
DURVAST (GECGP 16/04)	Phase II clinical study of Durvalumab (MEDI4736) in HIV-1 (Human Immunodeficiency Virus-1) positive patients with advanced solid tumors. NCT03094286
NIVEX (GECGP 16/05)	A Retrospective, Multicenter and Observational Study of Nivolumab Monotherapy Treatment in Subjects With Advanced or Metastatic Squamous (Sq) or Non-Squamous (Non-Sq) Non-Small Cell Lung Cancer (NSCLC) Who Have Received at Least One Prior Systemic Regimens for the Treatment of Stage IIIb/IV NSCLC Within the Expanded Access Program (EAP) in SPAIN. NCT03132493
ATEZO- BRAIN (GECGP 17/05)	Phase II Non-randomized Study of a Atezolizumab (MPDL3280A) in Combination With Carboplatin Plus Pemetrexed in Patients Who Are Chemotherapy-naïve and Have Stage IV Non-squamous Non-small Cell Lung Cancer Twith Asymptomatic Brain Metastasis. NCT03526900

SMALL CELL LUNG CANCER (SCLC) STUDIES	
STIMULI (ETOP/IFCT 4-12)	A Randomised Open-label Phase II Trial of Consolidation With Nivolumab and Ipilimumab in Limited-stage SCLC After Chemo-radiotherapy. NCT02046733
PEERS (GECGP 20/06)	A Phase II Study of Pembrolizumab, Lenvatinib and Chemotherapy Combination in First Line Extensive-stage Small Cell Lung Cancer (ES-SCLC). NCT05384015
RAISE (ETOP 23-22)	A Single-arm Phase II Trial of the Addition of Niraparib to Anti-PD-L1 Antibody Maintenance in Patients With SLFN11-positive, Extensive-disease Small Cell Lung Cancer. NCT05718323
OTHER LUNG TUMORS STUDIES	
BEAT-Meso (Mesothelioma) (ETOP 13-18)	A Multicentre Randomised Phase III Trial Comparing Atezolizumab Plus Bevacizumab and Standard Chemotherapy Versus Bevacizumab and Standard Chemotherapy as First-line Treatment for Advanced Malignant Pleural Mesothelioma. NCT03762018
PROMISE-Meso (Mesothelioma) (ETOP 9-15)	A Multicentre Randomised Phase III Trial Comparing Pembrolizumab Versus Standard Chemotherapy for Advanced Pre-treated Malignant Pleural Mesothelioma. NCT02991482
BIMES (Mesothelioma) (GECGP 20/09)	A Phase II Single Arm Clinical Trial Assessing the Efficacy and Safety of Bintrafusp Alfa (M7824) in Previously Treated Advanced Malignant Pleural MESothelioma (BIMES). NCT05005429
DUMAS (Pancoast) (GECGP 22/02)	Phase II Clinical Trial of Neo-adjuvant Chemo/Immunotherapy Followed by Adjuvant Treatment Depending on the Resection Status for the Treatment of NSCLC Patients Diagnosed With Pancoast Tumor. A Multicenter Exploratory Study. NCT05684276

EPIDEMIOLOGICAL STUDIES	
VAC-CaP (GECGP 21/01)	Observational Study on the Effectiveness and Safety of Vaccination Anti-SARS-CoV2 in Patients With Lung Cancer. NCT05009030
Thoracic Tumor Registry (RTT) (GECGP 16/01)	Thoracic Tumours Register. NCT02941458 <ul style="list-style-type: none"> • Substudy: TTR-ATLAS A Spanish Nationwide Biomarker NGS Testing Platform For Lung Cancer. • Substudy: TTR-ATLAS-RADON Radon Measurement In Homes Of Lung Cancer Patients.
OSIREX (GECGP 18/01)	A Retrospective, Multicenter and Observational Study of Osimertinib Monotherapy Treatment in Subjects With Advanced or Metastatic Non-Small Cell Lung Cancer EGFR-T790M Mutation-positive Who Have Received the Treatment Within the Special Use Medication Program in Spain. NCT03790397
SOLID (GECGP 20/04)	Study of the Immunity of Patients With Lung Cancer and COVID-19 Infection (SOLID). NCT04407143 <ul style="list-style-type: none"> • Substudy: SOLID I The scope is the identification of acquired immunity (IgG) in patients with lung cancer, whether or not they have presented symptoms of having suffered from COVID19. In addition, the description of the characteristics and evolution of patients with lung cancer who have contracted COVID-19 infection will be carried out. • Substudy: SOLID II The scope is the confirmation of the presence of antibodies (IgG) in patients who tested positive in Phase I of the study a few weeks after the first diagnosis made through the SOLID study. • Substudy: SOLID III The scope is the confirmation of the presence of antibodies (IgG) in patients with lung cancer who have been vaccinated with any of the available and authorized vaccines for SARS-COV2 and 6 months after said administration.
GRAVID (GECGP 20/02)	Observational Retrospective Register of Spanish Lung and Melanoma Cancer Patients With COVID19 Disease. NCT04344002

PHARMACOGENOMIC STUDIES	
SELINA (GECGP 16/02)	Analysis of Soluble Mediators, Cytokines, and Circulating Angiogenic Factors (FACs) as Potential Predictors / Prognostic Factors in Antiangiogenic Therapy Following Failure of First-line Chemotherapy in Advanced Non-squamous Lung Carcinoma. NCT03156868
REAL NADIM (GECGP 21/05)	Study of ctDNA as Prognostic Factor on Resectable Stage IIIA NSCLC Patients Treated With Neoadjuvant Treatment. NCT05382052
RING project (GECGP 17/03)	T790M Mutation Testing in Blood by Different Methodologies. NCT03363139
OBSERVATIONAL STUDIES	
S-REAL (GECGP 19/02)	First Real-world Data on Unresectable Stage III NSCLC Patients Treated With Durvalumab After Chemoradiotherapy. NCT03798535
LORLAPULM (GECGP 21/04)	Retrospective, Observational Study On The Efficacy And Safety Of Lorlatinib In ALK or ROS1 Metastatic Non-Small Cell Lung Cancer Patients Treated Within The Compassionate Use Program In Spain. NCT05167500
PLANET (GECGP 21/03)	Retrospective, Observational Study On The Efficacy And Safety Of Lorlatinib In ALK or ROS1 Metastatic Non-Small Cell Lung Cancer Patients Treated Within The Compassionate Use Program In Spain. NCT05167487
LUDICAS (GECGP 23/01)	Characteristics of Sexual Dysfunction in Lung Cancer Patients. NCT06018376

» Annex II.

Publications from 2015

EARLY STAGES	
CLINICAL TRIAL	PUBLICATION
NADIM II (NCT03838159)	<p>Perioperative Nivolumab and Chemotherapy in Stage III Non-Small-Cell Lung Cancer.</p> <p>M. Provencio, E. Nadal, J.L. Gonzalez-Larriba, A. Martinez-Marti, R. Bernabe, J. Bosch-Barrera, J. Casal-Rubio, V. Calvo, A. Insa, S. Ponce, N. Reguart, J. de Castro, J. Mosquera, M. Cobo, A. Aguilar, G. Lopez Vivanco, C. Camps, R. Lopez-Castro, T. Moran, I. Barneto, D. Rodriguez-Abreu, R. Serna-Blasco, R. Benitez, C. Aguado de la Rosa, R. Palmero, F. Hernando-Trancho, J. Martin-Lopez, A. Cruz-Bermudez, B. Massuti, and A. Romero.</p> <p>N Engl J Med. 2023 Aug 10;389(6):504-513</p>
NADIM (NCT03081689)	<p>Overall survival with neoadjuvant nivolumab plus chemotherapy in operable NSCLC. Tissue and plasma biomarkers for the prediction of long-term survival results from NADIM trial.</p> <p>M.Provencio, R. Serna-Blasco, E. Nadal, A. Insa, MR. García-Campelo, J. Casal, M. Dómine, M. Majem, D. Rodríguez-Abreu, A. Martínez-Martí, J. De Castro Carpeño, M. Cobo, G. López Vivanco, E. Del Barco, R. Bernabé Caro, N. Viñolas, I. Barneto Aranda, S. Viteri, E Pereira, A. Royuela, V. Calvo, J Martin, García-García F, M. Casarrubios, R.</p> <p>J Clin Oncol. 2022 May 16;JCO2102660</p> <p>Tumor microenvironment gene expression profiles associated to complete pathological response and disease progression in resectable NSCLC patients treated with neoadjuvant chemoimmunotherapy.</p> <p>Marta Casarrubios, Mariano Provencio, Ernest Nadal, Amelia Insa, María del Rosario García-Campelo, Joaquín Casal-Rubio, Manuel Dómine, Margarita Majem, Delvys Rodríguez-Abreu, Alex Martínez-Martí, Javier De Castro Carpeño, Manuel Cobo, Guillermo López Vivanco, Edel Del Barco, Reyes Bernabé Caro, Nuria Viñolas, Isidoro Barneto Aranda, Bartomeu Massuti, Belén Sierra-Rodero, Cristina Martínez-Toledo, Ismael Fernández-Miranda, Roberto Serna-Blanco, Atocha Romero, Virginia Calvo, Alberto Cruz-Bermúdez.</p> <p>ImmunoTherapy of Cancer 2022;10:e005320</p> <p>Clinical and Molecular Parameters Associated to Pneumonitis Development in Non-small Cell Lung Cancer Patients Receiving Neoadjuvant Chemoimmunotherapy from NADIM trial.</p> <p>Belén Sierra-Rodero, Alberto Cruz-Bermúdez, Ernest Nadal, Yago Garitaonandía, Amelia Insa, Joaquín Mosquera, Joaquín Casal-Rubio, Manuel Dómine, Margarita Majem, Delvys Rodríguez-Abreu, Alex Martínez-Martí, Javier De Castro Carpeño, Manuel Cobo, Guillermo López Vivanco, Edel Del Barco, Reyes Bernabé Caro, Nuria Viñolas, Isidoro Barneto Aranda, Santiago Viteri, Bartomeu Massuti, Raquel Laza-Briviesca, Marta Casarrubios, Aránzazu García-Grande, Atocha Romero, Fernando Franco, Mariano Provencio.</p> <p>J Immunother Cancer 2021;9:e002804</p>

Pretreatment Tissue TCR Repertoire Evenness Is Associated with Complete Pathologic Response in Patients with NSCLC Receiving Neoadjuvant Chemoimmunotherapy.

Marta Casarrubios, Alberto Cruz-Bermúdez, Ernest Nadal, Amelia Insa, María del Rosario García-Campelo, Joaquín Casal-Rubio, Manuel Dómine, Margarita Majem, Delvys Rodríguez-Abreu, Alex Martínez-Martí, Javier De Castro Carpeño, Manuel Cobo, Guillermo López Vivanco, Edel Del Barco, Reyes Bernabé Caro, Nuria Viñolas, Isidoro Barneto Aranda, Santiago Viteri, Bartomeu Massuti, Miguel Barquín, Raquel Laza-Briviesca, Belén Sierra-Rodero, Edwin R Parra, Beatriz Sanchez-Espiridion, Ignacio Wistuba, Atocha Romero, Virginia Calvo, Mariano Provencio.

[Clin Cancer Res. 2021 Nov 1;27\(21\):5878-5890](#)

Blood biomarkers associated to complete pathological response on NSCLC patients treated with neoadjuvant chemoimmunotherapy included in NADIM clinical trial.

Raquel Laza-Briviesca Alberto Cruz-Bermúdez, Ernest Nadal, Amelia Insa, María del Rosario García-Campelo, Gerardo Huidobro, Manuel Dómine, Margarita Majem, Delvys Rodríguez-Abreu, Alex Martínez-Martí, Javier De Castro Carpeño, Manuel Cobo, Guillermo López Vivanco, Edel Del Barco, Reyes Bernabé Caro, Nuria Viñolas, Isidoro Barneto Aranda, Santiago Viteri, Bartomeu Massuti, Marta Casarrubios, Belén Sierra-Rodero, Carlos Tarín, Aránzazu García-Grande, Cara Haymaker, Ignacio I. Wistuba, Atocha Romero, Fernando Franco.

[Clin. Transl. Med. 2021;11:e491](#)

Outcomes of surgical resection after neoadjuvant chemoimmunotherapy in stage IIIA non-small-cell lung cancer: Findings from the NADIM study.

Alejandra Romero Román, Jose Luis Campo-Cañaveral de la Cruz, Ivan Macía, Ignacio Escobar Campuzano, Santiago Figueroa Almánzar, María Delgado Roel, Carlos Gálvez Muñoz, Eva Mª García Fontán, Ignacio Muguruza Trueba, Laura Romero Vielva, Jose Ramon Cano Garcia, Elisabeth Martinez Tellez, Concepción Partida González, Marcelo Fernando Jiménez López, Unai Jiménez Maestre, Roberto Mongil Poce, David Sánchez Lorente, Antonio Álvarez Kindelan, Mariano Provencio Pulla.

[European Journal of Cardio-Thoracic Surgery, Volume 60, Issue 1, July 2021, Pages 81-88](#)

Neoadjuvant chemotherapy and nivolumab in resectable non-small-cell lung cancer (NADIM): an open-label, multicentre, single-arm, phase 2 trial.

M. Provencio, E. Nadal, A. Insa, MR. García-Campelo, J. Casal-Rubio, M. Dómine, M. Majem, D. Rodríguez-Abreu, A. Martínez-Martí, J. De Castro Carpeño, M. Cobo, G. López Vivanco, E. Del Barco, R. Bernabé Caro, N. Viñolas, I. Barneto Aranda, S. Viteri, E Pereira, A Royuela, M Casarrubios, C. Salas Anton, E. R. Parra, I. Wistuba, V. Calvo, R. Laza-Briviesca, A. Romero, B. Massuti and A. Cruz-Bermúdez.

[The Lancet Oncology, Vol. 21, No. 11, p1413-1422](#)

SCAT

[\(NCT00478699\)](#)

Spanish Lung Cancer Group SCAT trial: surgical audit to lymph node assessment based on IASLC recommendations.

José Ramón Jarabo Sarceda, Sergio Bolufer Nadal, Roberto Mongil Poce, Pedro López de Castro, Ramón Moreno Balsalobre, Juan Carlos Peñalver Cuesta, Raul Embún Flor, Joaquín Pac Ferrer, Francisco Javier Algar Algar, Antonio Pablo Gámez García, Marcelo F. Jiménez, Jesús Gabriel Sales-Badía, Eva Pereira, Bartomeu Massuti, Mariano Provencio, Florentino Hernando Trancho.

[Transl Lung Cancer Res 2021;10\(4\):1761-1772](#)

LOCALLY ADVANCED STAGES	
CLINICAL TRIAL	PUBLICATION
NORA (NCT02709720)	<p>Phase II clinical trial with metronomic oral vinorelbine and tri-weekly cisplatin as induction therapy, subsequently concomitant with radiotherapy (RT) in patients with locally advanced, unresectable, non-small cell lung cancer (NSCLC). Analysis of survival and value of ctDNA for patient selection.</p> <p>Mariano Provencio; Marga Majem, María Guirado, Bartomeu Massuti, Ramon de las Peñas, Ana Laura Ortega, Manuel Dómine, Raquel Marsé, María Ángeles Sala, Alfredo Paredes, Teresa Morán, Sergio Vázquez, Juan Coves, José Luis González Larriba, Jose Miguel Sánchez, David Vicente, Núria Farré, Luis Fernández Fornos, Irma Zapata, Roberto Serna, Atocha Romero, Dolores Isla.</p> <p>Lung Cancer 153 (2021) 25–34</p>
RENO (EudraCT Number: 2010-022927-31)	<p>Oral vinorelbine versus etoposide with cisplatin and chemo-radiation as treatment in patients with stage III non-small cell lung cancer: a randomized phase II (RENO study).</p> <p>Dolores Isla, Ramón De Las Peñas, Amelia Insa, Raquel Marsé, Natividad Martínez-Banaclocha, Pilar Mut, Teresa Morán, María Ángeles Sala, Bartomeu Massuti, Ana Laura Ortega, José Miguel Jurado, José Gómez-Codina, Pilar Diz, Ángel Artal, Vanesa Gutiérrez, María Francisca Vázquez, Nuria Viñolas, Inmaculada Maestu, Carlos Camps, Rosa Álvarez, Melchor Álvarez de Mon Soto, Santiago Ponce, Mariano Provencio.</p> <p>Lung Cancer VOLUME 135, P161-168, SEPTEMBER 01, 2019</p>
ADVANCES STAGES. WITH DRIVER	
BOOSTER (NCT03133546)	<p>Impact of smoking status on the relative efficacy of the EGFR TKI/angiogenesis inhibitor combination therapy in advanced NSCLC – A systematic review and meta-analysis.</p> <p>U. Dafni, R.A Soo*, S. Peters, Z. Tsourt, P. Zygoura, K.Vervita, J-Y. Hane, J. De Castro, L. Coate, M. Früh, S.M.S Hashemi, E. Nadal, E. Carcereny, M.A. Sala, R. Bernabé, M. Provencio Pulla, S. Cuffe, H.Roschitzki-Voser, R. Rosell, R.A. Stahel</p> <p>ESMO Open 2022 Jun;7(3):100507</p> <p>A randomised phase II study of osimertinib and bevacizumab versus osimertinib alone as second-line targeted treatment in advanced NSCLC with confirmed EGFR and acquired T790M mutations: the European Thoracic Oncology Platform (ETOP 10-16) BOOSTER trial.</p> <p>Ross A Soo, Ji-Youn Han, Urania Dafni, Byoung Chul Cho, Chong Ming Yeo, Ernest Nadal, Enric Carcereny, Javier de Castro, Maria Angeles Sala, Bernabe Reyes, Linda Coate, Mariano Provencio Pulla, Rosario Garcia Campelo, Sinead Cuffe, Sayed Hashemi, Martin Früh, Bartomeu Massuti, Jose Garcia, Manuel Dómine, Margarita Majem, Jose Miguel Sanchez, Christian Britschgi, Miklos Pless, Georgia Dimopoulou, Heidi Roschitzki-Voser, Barbara Ruepp, Rafael Rosell, Rolf Stahel, Solange Peters, on behalf of the ETOP 10-26 BOOSTER Collaborators</p> <p>Ann Oncol. 2021 Nov 26;S0923-7534(21)04825-0</p>

ALERT-Lung (NCT03445000)	<p>Alectinib for the treatment of pretreated RET-rearranged advanced NSCLC: results of the ETOP ALERT-lung trial.</p> <p>Enriqueta Felip Egbert Smit2 Miguel Angel Molina, Urania Dafni, Tomeo Massuti, Thierry Berghmans, Filipo de Marinis, Silvia Novello, Anne-Marie Dingemans, Manuel Cobo Dols, Santiago Viteri, Christian Britschgi, Sinead Cuffe, Mariano Provencio, Sabine Merkelbach-Bruse, Rosita Kammler, Barbara Ruepp, Heidi Roschitzki-Voser, Solange Peters, Jürgen Wolf, Rolf Stahel, on behalf of the ETOP 12-17 ALERT-lung Collaborators.</p> <p>Lung Cancer 2022;172:94-99</p>
GOAL	<p>Combination of gefitinib and olaparib versus gefitinib alone in EGFR mutant non-small-cell lung cancer (NSCLC): A multicenter, randomized phase II study (GOAL).</p> <p>Rosario Garcia-Campelo, Oscar Arrieta, Bartomeu Massuti, Delvys Rodriguez-Abreu, Ana Laura Ortega Granados, Margarita Majem, David Vicente, Pilar Lianes, Joaquim Bosch-Barrera, Amelia Insa, Manuel Dómine, Noemí Reguart, María Guirado, María Ángeles Sala, Sergio Vázquez-Estevez, Reyes Bernabé Caro, Ana Drozdowskyj, Ana Verdú, Niki Karachaliou, Miguel Angel Molina-Vila, Rafael Rosell, On behalf of The Spanish Lung Cancer Group (SLCG).</p> <p>Lung Cancer, ISSN: 0169-5002, Vol: 150, Page: 62-69</p>
EUCROSS (NCT02183870)	<p>Safety and efficacy of crizotinib in patients with advanced or metastatic ROS1-rearranged lung cancer (EUCROSS): A European phase 2 clinical trial.</p> <p>Sebastian Michels, Bartomeu Massuti, Hans-Ulrich Schildhaus, Jeremy Franklin, Martin Sebastian, Enriqueta Felip, Christian Grohé, Delvys Rodriguez-Abreu, Diana S.Y. Abdulla, Helge Bischoff, Christian Brandts, Enric Carcereny, Jesús Corral, Anne-Marie C. Dingemans, Eva Pereira, Jana Fassunke, Rieke N. Fischer, Masyar Gardizi, Lukas Heukamp, Amelia Insa, Anna Kron, Dipl. Ges.-Oek, Roopika Menon, Thorsten Persigehl, Martin Reck, Richard Riedel, Sacha I. Rothschild, Andreas H. Scheel, Matthias Scheffler, Petra Schmalz, Egbert F. Smit, Meike Limburg, Mariano Provencio, Niki Karachaliou, Sabine Merkelbach-Bruse, Martin Hellmich, Lucia Nogova, Reinhard Büttner, Rafael Rosell, Prof. Jürgen Wolf.</p> <p>Journal of Thoracic Oncology Vol. 14 No. 7: 1266-1276</p>
BELIEF (NCT01562028)	<p>Erlotinib and bevacizumab in patients with advanced non-small-cell lung cancer and activating EGFR mutations (BELIEF): an international, multicentre, single arm, phase 2 trial.</p> <p>Rosell R, Dafni U, Felip E, Curioni-Fontecedro A, Gautschi O, Peters S, Massuti B, Palmero R, Aix SP, Carcereny E, Früh M, Pless M, Popat S, Kotsakis A, Cuffe S, Bidoli P, Favaretto A, Froesch P, Reguart N, Puente J, Coate L, Barlesi F, Rauch D, Thomas M, Camps C, Gómez-Codina J, Majem M, Porta R, Shah R, Hanrahan E, Kammler R, Ruepp B, Rabaglio M, Kassapian M, Karachaliou N, Tam R, Shames DS, Molina-Vila MA, Stahel RA.</p> <p>Lancet Respir Med 2017; 5: 435-44</p>
EMPHASIS (NCT01652469)	<p>Randomized Phase III Trial of Erlotinib versus Docetaxel in Patients with Advanced Squamous Cell Non-Small Cell Lung Cancer Failing First-Line Platinum-Based Doublet Chemotherapy Stratified by VeriStrat Good versus VeriStrat Poor. The European Thoracic Oncology Platform (ETOP) EMPHASIS-lung Trial.</p> <p>Peters S, Stahel RA, Dafni U, Ponce Aix S, Massuti B, Gautschi O, Coate L, López Martín A, van Heemst R, Berghmans T, Meldgaard P, Cobo Dols M, Garde Noguera J, Curioni-Fontecedro A, Rauch D, Mark MT, Cuffe S, Biesma B, van Henten AM, Juan Vidal Ó, Palmero Sanchez R, Villa Guzmán JC, Collado Martin R, Peralta S, Insa A, Summers Y, Láng I, Horgan A, Ciardiello F, de Hosson S, Pieterman R, Groen HJ, van den Berg PM, Zielinski CC, Chittazhathu Kurian Kuruvilla Y, Gasca-Ruchti A, Kassapian M, Novello S, Torri V, Tsourt Z, Gregorc V, Smit EF.</p> <p>J Thorac Oncol. 2017 Apr;12(4):752-762</p>

<p>EURTAC (NCT00446225)</p>	<p>Economic Analysis of First-Line Treatment with Erlotinib in an EGFR-Mutated Population with Advanced NSCLC.</p> <p>Vergnenegre, B, Massuti, F, de Marinis, E, Carcereny, E, Felip, P, Do, J.M., Sanchez, L, Paz-Ares, MD, g, i Christos Chouaid, R, Rosell, on behalf of the Spanish Lung Cancer Group, Italian Association of Thoracic Oncology, and French Lung Cancer Group. Journal of Thoracic Oncology Vol. 11 No. 6: 801-807</p> <p>Association of EGFR L858R Mutation in Circulating Free DNA With Survival in the EURTAC Trial</p> <p>Niki Karachaliou, Clara Mayo-de las Casas, Cristina Queralt, Itziar de Aguirre, Boris Melloni, Felip Cardenal, Ramon Garcia-Gomez, Bartomeu Massuti, José Miguel Sánchez, Ruth Porta, Santiago Ponce-Aix, Teresa Moran, Enric Carcereny, Enriqueta Felip, Isabel Bover, Amelia Insa, Noemí Reguart, Dolores Isla, Alain Vergnenegre, Filippo de Marinis, Radj Gervais, Romain Corre, Luis Paz-Ares, Daniela Morales-Espinosa, Santiago Viteri, Ana Drozdowskyj, Núria Jordana-Ariza, Jose Luis Ramirez-Serrano, Miguel Angel Molina-Vila, Rafael Rosell, on behalf of the Spanish Lung Cancer Group. JAMA Oncol 2015 May;1(2):149-57</p> <p>BRCA1, LMO4, and CtIP mRNA Expression in Erlotinib-Treated Non-Small-Cell Lung Cancer Patients with EGFR Mutations.</p> <p>Niki Karachaliou, MD,* Carlota Costa, PhD,* Ana Gimenez-Capitan, PhD,* Miguel Angel Molina-Vila, PhD,* Jordi Bertran-Alamillo, PhD,* Clara Mayo, PhD,* Bartomeu Massuti, MD,† Margarita Majem, MD,‡ Enric Carcereny, MD,§ Teresa Moran, MD,§ Jose Javier Sanchez, MD,§ Santiago Viteri, MD,* Amaya Gasco, MD,* Luciano Wannesson, MD,¶ John Souglakos, MD,# Jose Jimeno, MD,* and Rafael Rosell, MD*§ on behalf of the Spanish Lung Cancer Group. J Thorac Oncol. 2013;8: 295-300</p> <p>Erlotinib versus standard chemotherapy as first-line treatment for European patients with advanced EGFR mutation-positive non-small-cell lung cancer (EURTAC): a multicentre, open-label, randomised phase 3 trial.</p> <p>Rafael Rosell, Enric Carcereny, Radj Gervais, Alain Vergnenegre, Bartomeu Massuti, Enriqueta Felip, Ramon Palmero, Ramon Garcia-Gomez, Cinta Pallares, Jose Miguel Sanchez, Rut Porta, Manuel Cobo, Pilar Garrido, Flavia Longo, Teresa Moran, Amelia Insa, Filippo De Marinis, Romain Corre, Isabel Bover, Alfonso Illiano, Eric Dansin, Javier de Castro, Michele Milella, Noemi Reguart, Giuseppe Altavilla, Ulpiano Jimenez, Mariano Provencio, Miguel Angel Moreno, Josefa Terrasa, Jose Muñoz-Langa, Javier Valdivia, Dolores Isla, Manuel Domine, Olivier Molinier, Julien Mazieres, Nathalie Baize, Rosario Garcia-Campelo, Gilles Robinet, Delvys Rodriguez-Abreu, Guillermo Lopez-Vivanco, Vittorio Gebbia, Lioba Ferrera-Delgado, Pierre Bombaron, Reyes Bernabe, Alessandra Bearz, Angel Artal, Enrico Cortesi, Christian Rolfo, Maria Sanchez-Ronco, Ana Drozdowskyj, Cristina Queralt, Itziar de Aguirre, Jose Luis Ramirez, Jose Javier Sanchez, Miguel Angel Molina, Miquel Taron, Luis Paz-Ares; Spanish Lung Cancer Group in collaboration with Groupe Français de Pneumo-Cancérologie and Associazione Italiana Oncologia Torácica. Lancet Oncol. 2012 Mar;13(3):239-46</p> <p>mRNA expression levels and genetic status of genes involved in the EGFR and NF-κB pathways in metastatic non-small-cell lung cancer patients.</p> <p>Mariacarmela Santarpia, Ignacio Magri, Maria Sanchez-Ronco, Carlota Costa, Miguel Angel Molina-Vila, Ana Gimenez-Capitan, Jordi Bertran-Alamillo, Clara, Susana Benlloch, Santiago Viteri, Amaya Gasco, Nuria Mederos, Enric Carcereny, Miquel Taron and Rafael Rosell. Journal of Translational Medicine 2011, 9:163</p>
---	--

	<p>Single nucleotide polymorphisms in MDR1 gen correlates with outcome in advanced non-small-cell lung cancer patients treated with cisplatin plus vinorelbine.</p> <p>N Viñolas I, M Provencio, N Reguart, F Cardenal, V Alberola, J M Sánchez-Torres, F J Barón, M Cobo, I Maestu, I Moreno, C Mesía, A Izquierdo, E Felip, M López-Brea, A Márquez, M Sánchez-Ronco, M Tarón, M C Santarpia, R Rosell; Spanish Lung Cancer Group. Lung Cancer. 2011 Feb;71(2):191-8</p>
ADVANCES STAGES. WITHOUT DRIVERS	
CLINICAL TRIAL	PUBLICATION
<p>TELMA (NCT03836066)</p>	<p>Atezolizumab Plus Bevacizumab as First-line Treatment for Patients With Metastatic Nonsquamous Non-Small Cell Lung Cancer With High Tumor Mutation Burden.</p> <p>Mariano Provencio, Ana Laura Ortega, Juan Coves-Sarto, Virginia Calvo, Raquel Marsé-Fabregat, Manuel Dómine, María Guirado, Enric Carcereny, N. Fernández, Elia Martínez, Remei Blanco, Luis León-Mateos, José Miguel Sánchez-Torres, Ivana Gabriela Sullivan, Manuel Cobo, Alfredo Sánchez-Hernández, Bartomeu Massuti, Belen Sierra-Rodero, Cristina Martinez-Toledo, Roberto Serna-Blanco, Atocha Romero, Alberto Cruz-Bermúdez. JAMA Oncol. 2023;9(3):344-353</p>
<p>ATEZO- BRAIN (NCT03526900)</p>	<p>Phase II Trial of Atezolizumab Combined with Carboplatin and Pemetrexed for Patients with Advanced Non-Squamous NSCLC with Untreated Brain Metastases (Atezo-Brain, GECPI7/05).</p> <p>Ernest Nadal, Delvys Rodríguez-Abreu, Marta Simó, Bartomeu Massuti, Oscar Juan, Gerardo Huidobro, Rafael López, Javier De Castro, Anna Estival, Rosario Garcia-Campelo, Ivana Sullivan, Enriqueta Felip, Ana Blasco, Maria Guirado, Eva Pereira, Noelia Vilariño, Valentín Navarro, Jordi Bruna. J Clin Oncol. 2023 Aug 21;JCO2202561</p>
<p>DURVAST (NCT03094286)</p>	<p>Assessment of the Feasibility and Safety of Durvalumab for Treatment of Solid Tumors in Patients With HIV-1 Infection. The Phase 2 DURVAST Study.</p> <p>Maria Gonzalez-Cao, Teresa Morán, Judith Dalmau, Javier Garcia-Corbacho, Jillian W. P. Bracht, Reyes Bernabe, Oscar Juan, Javier de Castro, Remei Blanco, Ana Drozdowskyj, Jordi Argilagué, Andreas Meyerhans, Julia Blanco, Julia G. Prado, Jorge Carrillo, Bonaventura Clotet, Bartomeu Massuti, Mariano Provencio, Miguel A. Molina-Vila, Clara Mayo de las Casa, Monica Garzon, Peng Cao, Chung-Ying Huang, Javier Martinez-Picado and Rafael Rosell. JAMA Oncol. 2020 Apr 9;6(7):1063-1067</p>

SPLENDOR (NCT02129699)	<p>Combined, patient-level, analysis of two randomised trials evaluating the addition of denosumab to standard first-line chemotherapy in advanced NSCLC - The ETOP/EORTC SPLENDOR and AMGEN-249 trials.</p> <p>Peters S, Danson S, Ejedepang D, Dafni U, Hasan B, Radcliffe H-S, Bustin F, Crequit J, Coate L, Guillot M, Surmont V, Rauch D, Rudzki J, O'Mahony D, Barneto Aranda I, Scherz A, Tsourti Z, Roschitzki-Voser H, Pochesci A, Demonty G, Stahel RA, O'Brien M. Lung Cancer 2021;161:76-85</p> <p>A Randomized Open-Label Phase III Trial Evaluating the Addition of Denosumab to Standard First-Line Treatment in Advanced NSCLC: The European Thoracic Oncology Platform (ETOP) and European Organisation for Research and Treatment of Cancer (EORTC) SPLENDOR Trial.</p> <p>Peters S, Danson S, Hasan B, Dafni U, Reinmuth N, Majem M, Tournoy KG, Mark MT, Pless M, Cobo M, Rodriguez-Abreu D, Falchero L, Moran T, Ortega Granados AL, Monnet I, Mohorcic K, Sureda BM, Betticher D, Demedts I, Macias JA, Cuffe S, Luciani A, Sanchez JG, Curioni-Fontecedro A, Gautschi O, Price G, Coate L, von Moos R, Zielinski C, Provencio M, Menis J, Ruepp B, Pochesci A, Roschitzki-Voser H, Besse B, Rabaglio M, O'Brien MER, Stahel RA.. J Thorac Oncol. 2020 Oct;15(10):1647-1656</p>
--	---

ESOGIA (NCT01257139)	<p>Use of a Comprehensive Geriatric Assessment for the Management of Elderly Patients With Advanced Non-Small-Cell Lung Cancer: The Phase III Randomized ESO GIA-GFPC-GECGP 08-02 Study.</p> <p>Romain Corre, Laurent Greillier, Hervé Le Caër, Clarisse Audigier-Valette, Nathalie Baize, Henri Bérard, Lionel Falchero, Isabelle Monnet, Eric Dansin, Alain Vergnenègre, Marie Marcq, Chantal Decroisette, Jean-Bernard Auliac, Suzanna Bota, Régine Lamy, Bartomeu Massuti, Cécile Dujon, Maurice Pérol, Jean-Pierre Daurès, Renaud Descourt, Hervé Léna, Carine Plassot and Christos Chouaïd. J Clin Oncol. 2016;34(13):1476-1483</p>
--	--

SMALL CELL LUNG CANCER (SCLC) STUDIES	
CLINICAL TRIAL	PUBLICATION
STIMULI (NCT02046733)	<p>Consolidation nivolumab and ipilimumab versus observation in limited-disease small cell lung cancer after chemo-radiotherapy - Results from the randomised phase II ETOP/IFCT 4-12 STIMULI trial.</p> <p>S Peters, J-L Pujol, U Dafni, M Dómine, S Popat, M Reck, J Andrade, A Becker, D Moro-Sibilot, A Curioni-Fontecedro, O Molinier, K Nackaerts, A Insa Mollá, R Gervais, G López Vivanco, J Madelaine, J Mazieres, M Faehling, F Griesinger, M Majem, J L González Larriba, M Provencio Pulla, K Vervita, H Roschitzki-Voser, B Ruepp, P Mitchell, R A Stahel, C Le Pechoux, D De Ruyscher, ETOP/IFCT 4-12 STIMULI Collaborators. Ann Oncol. 2022 Jan;33(1):67-79</p>

CONVERT (NCT00433563)	<p>Concurrent once-daily versus twice-daily chemoradiotherapy in patients with limited-stage small-cell lung cancer (CONVERT): an open-label, phase 3, randomised, superiority trial.</p> <p>Corinne Faivre-Finn, Michael Snee, Linda Ashcroft, Wiebke Appel, Fabrice Barlesi, Adityanarayan Bhatnagar, Andrea Bezjak, Felipe Cardenal, Pierre Fournel, Susan Harden, Cecile Le Pechoux, Rhona McMenemin, Nazia Mohammed, Mary O'Brien, Jason Pantarotto, Veerle Surmont, Jan P Van Meerbeeck, Penella J Woll, Paul Lorigan, Fiona Blackhall. Lancet Oncol 2017; 18: 1116-25</p>
---	---

OTHER LUNG TUMORS STUDIES	
CLINICAL TRIAL	PUBLICATION
BEMME, Epidemiologic Spanish Malignant Mesothelioma Database	<p>Malignant Pleural Mesothelioma: Treatment Patterns and Outcomes from the Spanish Lung Cancer Group.</p> <p>J Remon, E Nadal, M Dómine, J Ruffinelli, Y García, JC Pardo, R López, A Cilleruelo, R García-Campelo, P Martín, O Juan, JL González-Larriba, M Provencio, E Olmedo, S Ponce, D Cumplido, C Barenys, M Majem, B Massutti, D Rodriguez-Abreu, R Porta, MA Sala, M Martinez-Kareaga, P Lianes, N Reguart. Lung Cancer 148 (2020) 83-90</p>

PROMISE-Meso (Mesothelioma) (NCT02991482)	<p>A prognostic score for patients with malignant pleural mesothelioma (MPM) receiving second-line immunotherapy or chemotherapy in the ETOP 9-15 PROMISE-meso phase III trial.</p> <p>Giuseppe Luigi Banna, Alfredo Addeo, Panagiota Zygoura, Zoi Tsourti, Sanjay Popat, Alessandra Curioni-Fontecedro, Ernest Nadal, Riyaz Shah, Anthony Pope, Patricia Fisher, James Spicer, Amy Roy, David Gilligan, Oliver Gautschi, Wolf-Dieter Janthur, Rafael López-Castro, Heidi Roschitzki-Voser, Urania Dafni, Solange Peters, Rolf A. Stahel, on behalf of the ETOP 9-15 PROMISE-meso Collaborators. Lung Cancer, ISSN: 0169-5002, Vol: 169, Page: 77-83 (2022)</p> <p>A multicentre randomised phase III trial comparing pembrolizumab versus single-agent chemotherapy for advanced pre-treated malignant pleural mesothelioma: the European Thoracic Oncology Platform (ETOP 9-15) PROMISE-meso trial.</p> <p>S. Popat, A. Curioni-Fontecedro, U. Dafni, R. Shah, M. O'Brien, A. Pope, P. Fisher, J. Spicer, A. Roy, D. Gilligan, O. Gautschi, E. Nadal, W. D. Janthur, R. López Castro, R. García Campelo, S. Rusakiewicz, I. Letovanec, V. Polydoropoulou, H. Roschitzki-Voser, B. Ruepp, A. Gasca-Ruchti, S. Petersz & R. A. Stahel. Annals of Oncol, Volume 31 - Issue 12 - 2020, pages 1734-1745</p>
---	--

EPIDEMIOLOGICAL STUDIES	
Thoracic Tumor Registry (RTT) (NCT02941458)	<p>Real-world treatment patterns and survival outcomes for patients with stage III NSCLC in Spain: a nationwide registry analysis.</p> <p>Mariano Provencio, Eric Carcereny, Rafael López Castro, Virginia Calvo, Delys Rodríguez Abreu, Manuel Cobo, Ana Laura Ortega, Reyes Bernabé, María Guirado, Bartomeu Massutí, Edel del Barco, Joaquim Bosch-Barrera, Carlos Camps, Robert Carroll, Caroline Raultx, Laure Lacoïn, Carlos Chaib, John Penrod, Lein Vox, Eleanor Ralphs, Melinda Daumont. Transl Lung Cancer Res 2023;12(10):2113-2128</p> <p>Addressing lung cancer screening eligibility in Spain using 2013 and 2021 US Preventive Service Task Force criteria: cross-sectional study.</p> <p>Cristina Candal-Pedreira, Alberto Ruano-Ravina, Virginia Calvo de Juan, Manuel Cobo, José Manuel Trigo, Enric Carcereny, Marc Cucurull, Rafael López Castro, Eduardo Solís García, Amparo Sánchez-Gastaldo, Bartomeu Massutí, Delys Rodríguez-Abreu, Anna Estival, María Guirado Risueño, María Pamiés Ramón, Rosario García Campelo, Guillermo Alonso-Jáudenes, Carlos Camps, Edel del Barco Morillo, Clara González Ojea, Manuel Dómine, Alfredo Sanchez-Hernandez, Joaquim Bosch-Barrera, María Ángeles Sala González and Mariano Provencio. ERJ Open Res 2023; 9: 00468-2023</p>

Representatividad del Registro de Tumores Torácicos de España. Comparación de datos sociodemográficos con otros registros nacionales.

Cristina Candal-Pedreira, Alberto Ruano-Ravina, Enric Carcereny, Delvys Rodríguez-Abreu, María Guirado-Risueño, Rafael López-Castro, Bartomeu Massutí, Ana Blasco, Ana Laura Ortega, Mariano Provencio.

[Gaceta Sanitaria, ISSN: 0213-9111 \(2022\)](#)

Determination of essential biomarkers in lung cancer: a real-world data study in Spain.

Mariano Provencio, Manuel Cobo, Delvys Rodríguez-Abreu, Virginia Calvo, Enric Carcereny, Alejandra Cantero, Reyes Bernabé, Gretel Benitez, Rafael López Castro, Bartomeu Massutí, Edel del Barco, Rosario Garcia Campelo, Maria Guirado, Carlos Camps, Ana Laura Ortega, Jose Luis González Larriba, Alfredo Sánchez, Joaquín Casal, M. Angeles Sala, Oscar Juan, Joaquim Bosch-Barrera, Juana Oramas, Manuel Dómine, Jose Manuel Trigo, Remei Blanco, Julia Calzas, Idoia Morilla, Airam Padilla, Maria Torrente.

[BMC Cancer \(2022\)22:732](#)

Are there differences by sex in Lung cancer characteristics at diagnosis? A nationwide Study.

Alberto Ruano-Ravina, Mariano Provencio, Virginia Calvo de Juan, Enric Carcereny, Anna Estival, Delvys Rodríguez-Abreu, Gretel Benítez, Rafael López-Castro, Marta Belver, María Guirado-Risueño, Carlos Guirao-Rubio, Ana Blasco, Bartomeu Massutí, Ana Laura Ortega, Manuel Cobo, Joaquín Mosquera-Martínez, Carlos Aguado de la Rosa, Joaquim Bosch-Barrera, Autor Virgen Rocío, Edel del Barco Morillo, Óscar Juan, Manuel Dómine, José Manuel Trigo, Diego Pereiro Corbacho, Juana Oramas.

[Transl Lung Cancer Res 2021;10\(10\):3902-3911](#)

Prognostic model of long-term advanced stage (IIIB-IV) EGFR mutated non-small cell lung cancer (NSCLC) survivors using real-life data.

Lourdes Gutierrez, Enric Carcereny, Rafael Lopez-Castro, Delvys Rodríguez-Abreu, Bartomeu Massutí, Jose Luis González Larriba, Rosario Garcia Campelo, Joaquim Bosh-Barrera, Maria Guirado, Carlos Camps, Manuel Dómine, Reyes Bernabé, Joaquin Casal, Juana Oramas, Ana Laura Ortega, M^a Angeles Sala, Airam Padilla, David Aguiar, Oscar Juan-Vidal, Remei Blanco, Edel del Barco, Ana Royuela PhD, Mariano Provencio.

[BMC Cancer \(2021\) 21:977](#)

Epidemiology, treatment and survival of Small Cell Lung Cancer in Spain: information from the Thoracic Tumor Registry.

Fernando Franco, Enric Carcereny, Maria Guirado, Ana L. Ortega, Rafael Lopez-Castro, Delvys Rodríguez-Abreu, Rosario Garcia-Campelo, Edel del Barco, Oscar Juan, Ana Blasco, Jose L Gonzalez-Larriba, Manuel Domine, Jose M. Trigo, Manuel Cobo, Sara Cerezo, Julia Calzas, Bartomeu Massutí, Joaquim Bosch-Barrera, Mariano Provencio.

[PLoS ONE 16\(6\):e0251761](#)

Lung cancer symptoms at diagnosis: results of a nationwide registry study.

Alberto Ruano-Ravina, Mariano Provencio, Virginia Calvo de Juan, Enric Carcereny, María Teresa Morán, Delvys Rodríguez-Abreu, Rafael López-Castro, Eugenio Cuadrado-Albite, María Guirado, Lucía Gómez-González, Bartomeu Massutí, Ana Laura Ortega, Ana Blasco, Manuel Cobo, Rosario García Campelo, Joaquim Bosch, José Manuel Trigo, Óscar Juan, Carlos Aguado de la Rosa, Manuel Dómine, María Ángeles Sala, Juana Oramas, Joaquín Casal, Sara Cerezo..

[ESMO Open 2020;5:e001021](#)

Sex is a strong prognostic factor in stage IV non-small-cell lung cancer patients and should be considered in survival rate estimation.

Miguel Barquín, Virginia Calvo, Francisco García-García, Beatriz Nuñez, Estela Sánchez-Herrero, Roberto Serna-Blasco, Milda Auglyte, Enric Carcereny, Delvys Rodríguez-Abreu, Rafael López Castro, María Guirado, Carlos Camps, Joaquín Bosch-Barrera, Bartomeu Massuti, Ana Laura Ortega, Edel del Barco, José Luis Gonzalez-Larriba, David Aguiar, Rosario García-Campelo, Manuel Dómine, Sara Agraso, M^a Angeles Sala, Juana Oramas, Reyes Bernabé, Remei Blanco, Consuelo Parejo, Alberto Cruz, Ernestina Menasalvas, Ana Royuela, Atocha Romero, Mariano Provencio.

[Cancer Epidemiology 67 \(2020\) 101737](#)

Lung cancer in Spain: Information from the Thoracic Tumors Registry (TTR study).

Mariano Provencio, Enric Carcereny, Delvys Rodríguez-Abreu, Rafael López-Castro, María Guirado, Carlos Camps, Joaquim Bosch-Barrera, Rosario García-Campelo, Ana Laura Ortega-Granados, José Luis González-Larriba, Joaquín Casal-Rubio, Manuel Domine, Bartomeu Massutí, María Ángeles Sala, Reyes Bernabé, Juana Oramas and Elvira del Barco.

[Transl Lung Cancer Res 2019;8\(4\):461-475](#)

OSIREX

[\(NCT03790397\)](#)

Osimertinib monotherapy in advanced EGFR-T790M mutation-positive non-small cell lung cancer (NSCLC) patients treated within the Special Use Medication Program (SUMP) in Spain. OSIREX-Spanish Lung Cancer Group.

Mariano Provencio, Josefa Terrasa, Pilar Garrido, Rosario Garcia Campelo, Francisco Aparisi, Pilar Diz, David Aguiar, Carlos García-Giron, Julia Hidalgo, Carlos Aguado, Jorge García González, Emilio Esteban, Lorenzo Gómez-Aldavari, Teresa Moran, Oscar Juan, Luís Enrique Chara, Juan L. Martí, Rafael López Castro, Ana Laura Ortega, Elia Martínez Moreno, Juan Coves, Ana M. Sánchez Peña; Joaquim Bosch-Barrera; Amparo Sánchez Gastaldo; Natalia Fernández Núñez; Edel del Barco; Manuel Cobo; Dolores Isla; Margarita Majem; Fátima Navarro; Virginia Calvo.

[BMC Cancer volume 21, Article number: 230 \(2021\)](#)

SOLID

[\(NCT04407143\)](#)

Immunogenicity of COVID-19 vaccines in lung cancer patients: a SOLID substudy interim analysis.

Mariano Provencio, Anna Estival, Fernando Franco, Guillermo López Vivanco, Maria Saigí, Hugo Arasanz, Pilar Diz, Enric Carcereny, Javier Garcia, Carlos Aguado, Joaquin Mosquera, Virginia Calvo, xxxx, Margarita Majem, Joaquim Bosch-Barrera, Xavier Mielgo, María Guirado, Oscar Juan-Vidal, Ana Blasco, Clara L. Gozálvez, Anabel del Barrio, Teresa de Portugal, Ana López-Martín, Gloria Serrano, Begoña Campos, Judit Rubio, Silvia Catot, Beatriz Esteban, Juan Luís Martí Ciriquian, Edel del barco.

[Lung Cancer 184 \(2023\)107323](#)

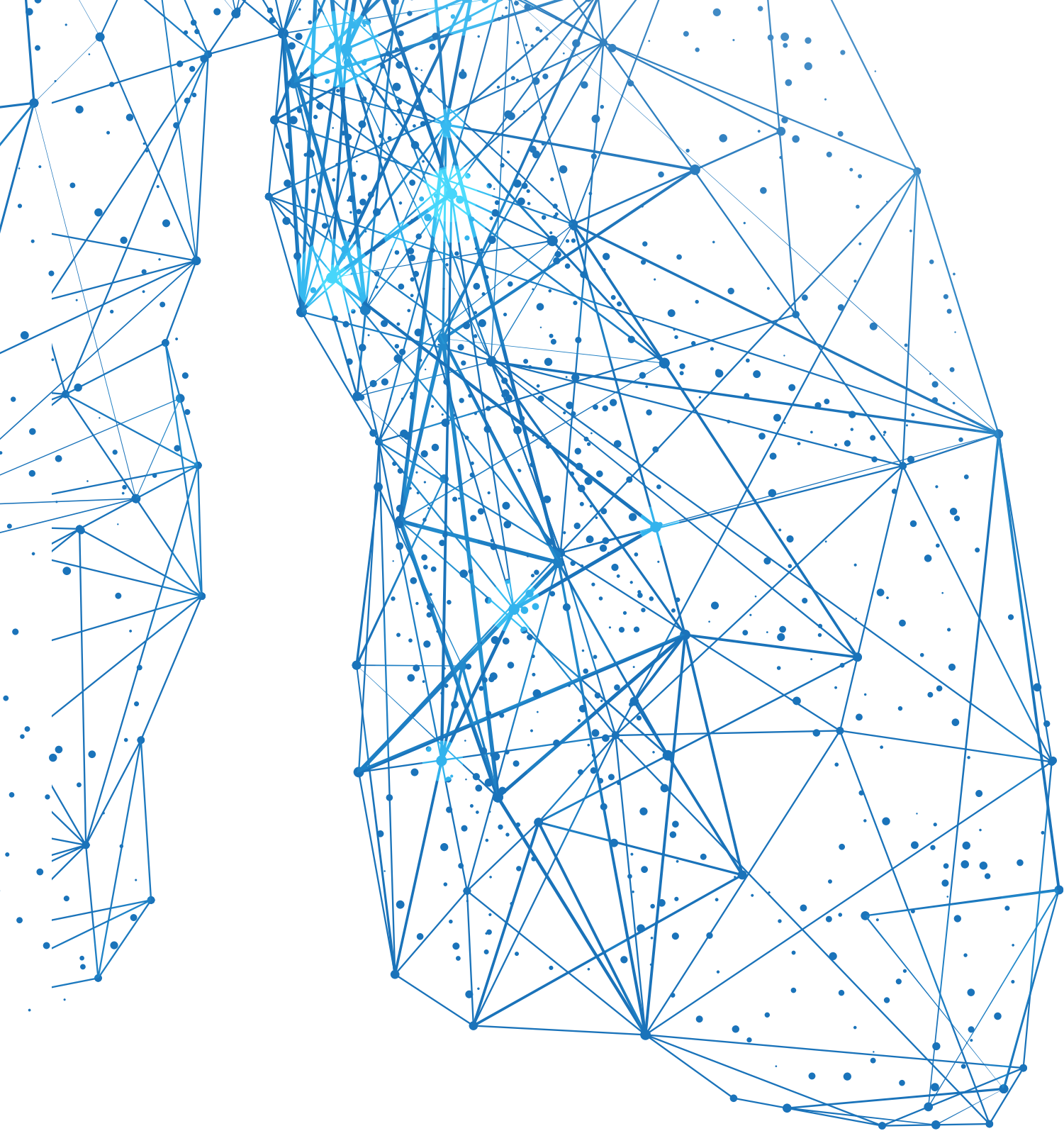
Seroprevalence and immunological memory against SARS-CoV-2 in lung cancer patients: the SOLID study.

Mariano Provencio, MD, PhD, Delvys Rodríguez-Abreu MD, Ana Laura Ortega MD, Gloria Serrano MD, Carlos Aguado MD, Fernando Franco MD, Vanesa Gutierrez MD, Guillermo López Vivanco MD, María Guirado MD, Gretel Benítez MD, Anna Estival MD, Virginia Calvo MD, Beatriz Jiménez MD, Hugo Arasanz MD, Juan Coves MD, Margarita Majem MD, Bartomeu Massutí MD, Sergio Vázquez MD, Oscar Juan-Vidal MD, Ana Collazo MD, Clara Lucía Gozálvez MD, Edel Del Barco MD, Adriana Rosero MD, Joaquim Bosch-Barrera MD, María Ángeles Moreno MD, Xavier Mielgo MD, Juan Carlos Villa MD, Ana López-Martín MD, Juan Felipe Córdoba MD, Francisco de Asís Aparici MD, Marta Zafra MD, Joaquin Mosquera MD, Javier Pérez Altozano MD, Ernest Nadal MD, Silvia Catot MD, José Balsalobre MD, Teresa de Portugal MD, Paloma Martín MD, Susana Cuesta de Juan MD, Manuel Cobo MD..

[Transl Lung Cancer Res 2022;11\(1\):53-6](#)

GRAVID (NCT04344002)	Lung Cancer Patients with COVID-19 in Spain: GRAVID study. Mariano Provencio; José María Mazarico Gallego; Antonio Calles; Mónica Antoñanzas; Cristina Pangua; Xabier Mielgo Rubio; Ernest Nadal; Rafael López Castro; Ana López-Martín; Edel del Barco; Manuel Dómine; Fernando Franco; Pilar Diz; Carmen Sandoval; Elia Sais Girona; Ivana Sullivan; M ^a Ángeles Sala; Gema García Ledo; Marc Cucurull; Joaquín Mosquera; Mireia Martínez; Luis Enrique Chara; Edurne Arriola; Beatriz Esteban Herrera; José Ramón Jarabo; Rosa Álvarez Álvarez; Javier Baena; María González Cao. Lung Cancer 157 (2021) 109-115
PHARMACOGENOMICS STUDIES	
CLINICAL TRIAL	PUBLICATION
RING project (NCT03363139)	Comprehensive cross-platform comparison of methods for non-invasive EGFR mutation testing: Results of the RING observational trial. Atocha Romero, Eloisa Jantus-Lewintre, Beatriz García-Peláez, Ana Royuela, Amelia Insa, Patricia Cruz, Ana Collazo, Javier Pérez Altozano, Oscar Juan Vidal, Pilar Diz, Manuel Cobo, Berta Hernández, Sergio Vázquez Estevez, Gretel Benítez, María Guirado, Margarita Majem, Reyes Bernabé, Ana Laura Ortega, Ana Blasco, Joaquim Bosch-Barrera, Jose M. Jurado, Jorge García González, Santiago Viteri, Carlos García Giron, Bartomeu Massutí, Ana Lopez Martín, Alejandro Rodríguez-Festa, Silvia Calabuig-Fariñas, Miguel Ángel Molina-Vila, Mariano Provencio. Molecular Oncology 15 (2021) 43-56
OBSERVATIONAL STUDIES	
ANGIOMET (NCT01814163)	Prospective exploratory analysis of angiogenic biomarkers in advanced NSCLC patients treated with bevacizumab plus chemotherapy. The ANGIOMET study. Eloisa Jantus Lewintre, Bartomeu Massutí Sureda, Jose Luis González Larriba, Delvys Rodríguez-Abreu, Oscar Juan, Manuel Dómine, Mariano Provencio Pulla, Javier de Castro, Rafael Rosell, Carlos Camps in behalf of Grupo Español de Cáncer de Pulmón (GECGP). Front. Oncol., 26 July 2021 vol 11 /Article 695038
OPH1 (01/16)	Analysis of circulating tumor DNA to identify EGFR positive NSCLC patients at low risk of progression who can benefit from sequential Tyrosine Kinase Inhibitor treatment. Mariano Provencio, Roberto Serna Blasco, Fabio Franco, Virginia Calvo, Ana Royuela, Mylda Agluite, Alfredo Sánchez, María de Julian Campayo, Carlos García Girón, Manuel Dómine, Eloisa Jantus, José Miguel Sánchez, Juana Oramas, Joaquim Bosch-Barrera, María Ángeles Salas, María Sereno, Ana Laura Ortega, Luis Chara, Berta Hernández, Airam Padilla, Juan Coves, Remei Blanco, José Balsalobre, Xavier Mielgo, Coralía Bueno, Atocha Romero. European Journal of Cancer 149(2021) 61-72

OTHER PUBLICATIONS	
PROJECT	PUBLICATION
CLARIFY	Synergy between imputed genetic pathway and clinical information for predicting recurrence in early stage non-small cell lung cancer. Mohan Timilsina, Dirk Fey, Samuele Buosi, Adrianna Janik, Luca Costabello, Enric Carcereny, Delvys Rodríguez Abreu, Manuel Cobo, Rafael López Castro, Reyes Bernabé, Pasquale Minervini, Maria Torrente, Mariano Provencio, Vít Nováček Journal of Biomedical Informatics 144 (2023) 104424 Machine Learning-Assisted Recurrence Prediction for Early-Stage Non-Small-Cell Lung Cancer Patients. Adrianna Janik, Maria Torrente, Luca Costabello, Virginia Calvo, Brian Walsh, Carlos Camps Sameh K. Mohamed, Ana L. Ortega. Vít Nováček, Bartomeu Massutí, Pasquale Minervini, M.Rosario Garcia Campelo, Edel del Barco, Joaquim Bosch-Barrera, Ernestina Menasalvas, Mohan Timilsina, Mariano Provencio. JCO Clinical Cancer Informatics; 7: e2200062 (2023)
Clinical casebook	Clinical Casebook. 11th Lung Cancer Competency Course. Spanish Lung Cancer Group. ISBN: 978-84-09-50369-8
Access to innovation	Difficulties on the access to innovative targeted therapies for lung cancer in Spain. Virginia Calvo, Carlos Camps, Enric Carcereny, Manuel Cobo, Manuel Dómine, María Rosario García Campelo, José Luis González Larriba, María Guirado, Florentino Hernando Trancho, Bartomeu Massutí; Ernest Nadal, Delvys Rodríguez-Abreu, Alfredo Sánchez, Ivana Gabriela Sullivan, Mariano Provencio on behalf of the Spanish Lung Cancer Group (SLCG / GECGP). Clin Transl Oncol (2023) Demoras y restricciones en el acceso a tratamientos innovadores para el cáncer de pulmón en España. M. Provencio on behalf of Grupo Español de Cáncer de Pulmón. Rev Esp- Econ. Salud V 16 / N 2. 2021
Lung cancer tumor board quality	Quality Indicators and Excellence Requirements for a Multidisciplinary Lung Cancer Tumor Board by the Spanish Lung Cancer Group. María Guirado, Alfredo Sanchez-Hernandez, Lara Pijuan,, Cristina Teixido, Antonio Gómez-Caamaño, Ángel Cilleruelo-Ramos. Clin Transl Oncol. 2022 Mar;24(3):446-459 Clinical impact of delays in the management of lung cancer patients in the last decade: systematic review. María Guirado · Elena Fernández Martín · Alberto Fernández Villar · Arturo Navarro Martín · Alfredo Sánchez-Hernández. Ann Oncol.2021 Nov 26;S0923-7534(21)04825-0



Av. Meridiana, 358 / 6ª planta
08027 Barcelona
Tel. +34 934 302 006 · Fax. +34 934 191 768
Email: secretaria@gecp.org
www.gecp.org